



作成承認印	配布許可印
	

FMI10

FAA 31051

PARTS LIST

修理部品表

Nikon | NIKON CORPORATION
Tokyo, Japan

Copyright © 1995 by Nikon Corporation.
All Rights Reserved.
無断転載を禁ず!!

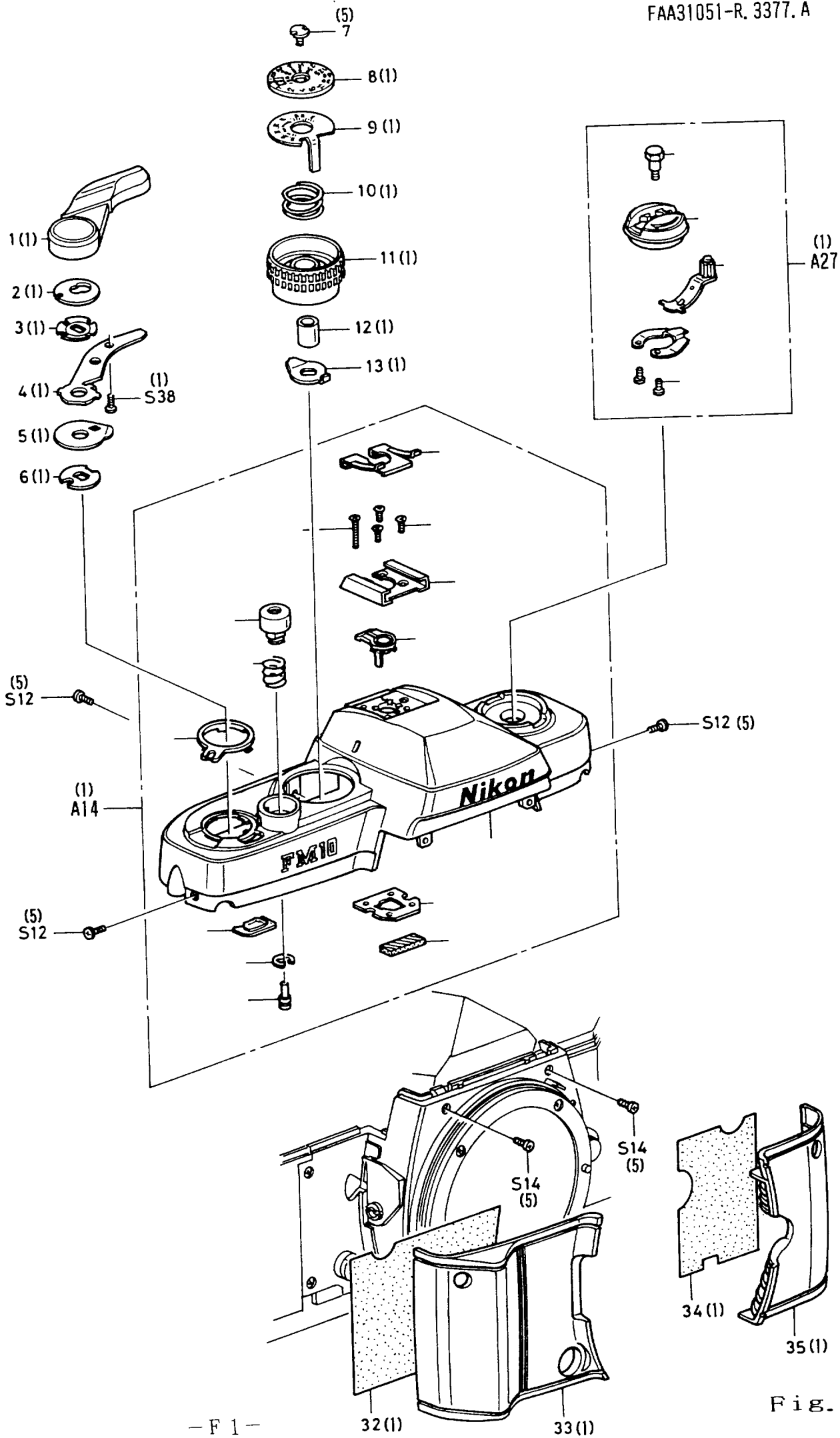
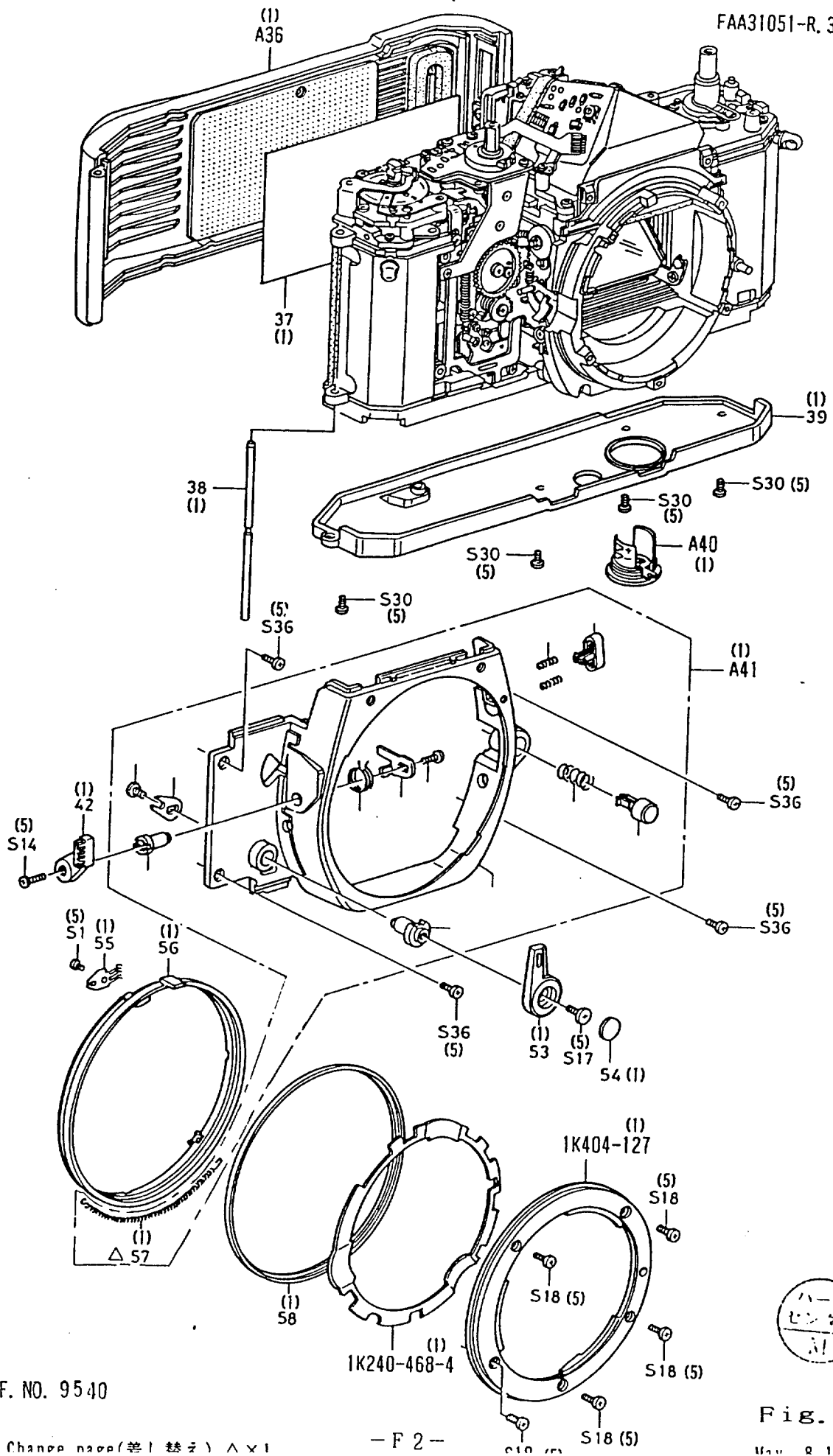


Fig. 1

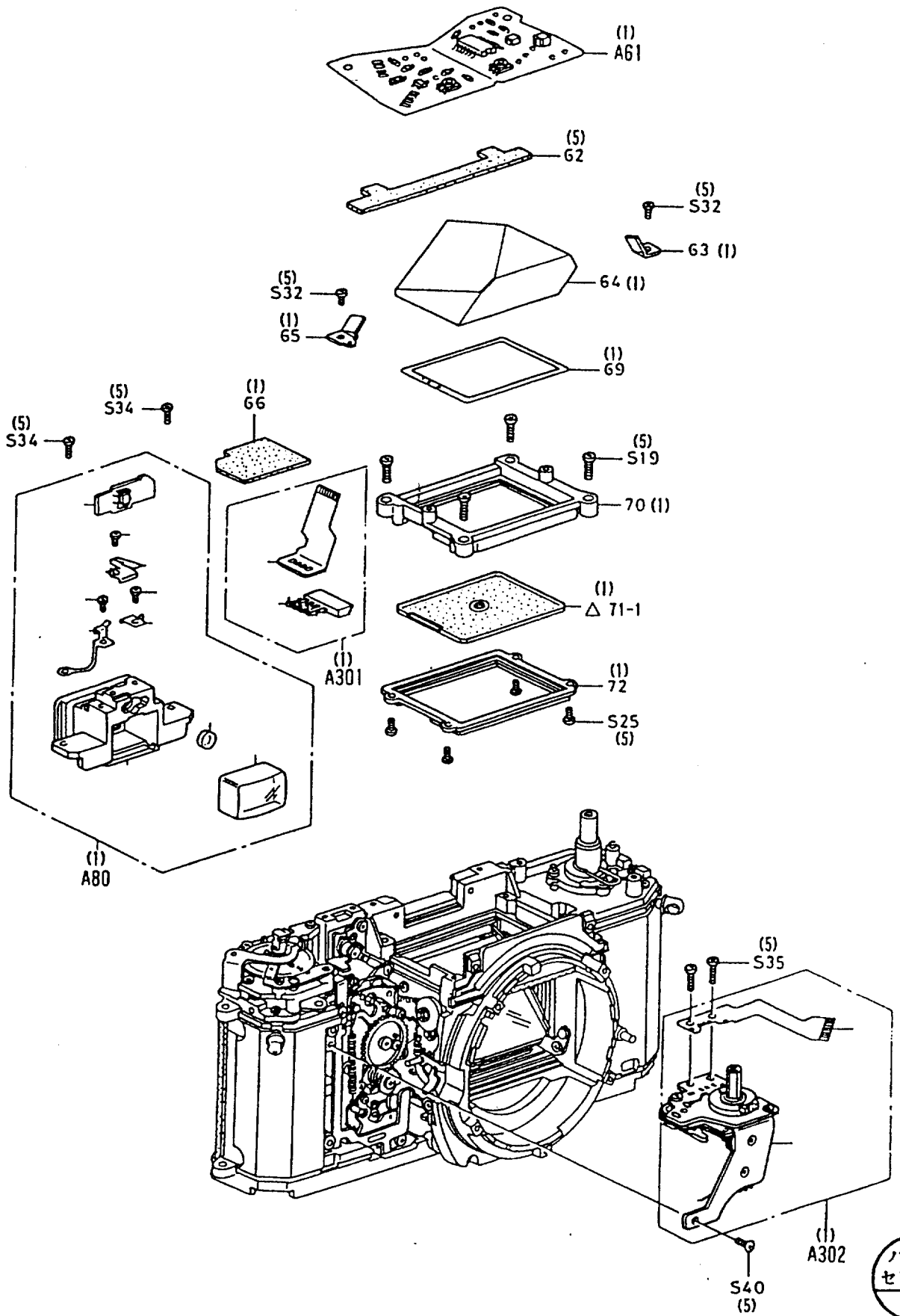


RP-INF. NO. 9540

Change name (差し替り) A x 1



Fig. 2



パーツ
センター
M

Fig. 3

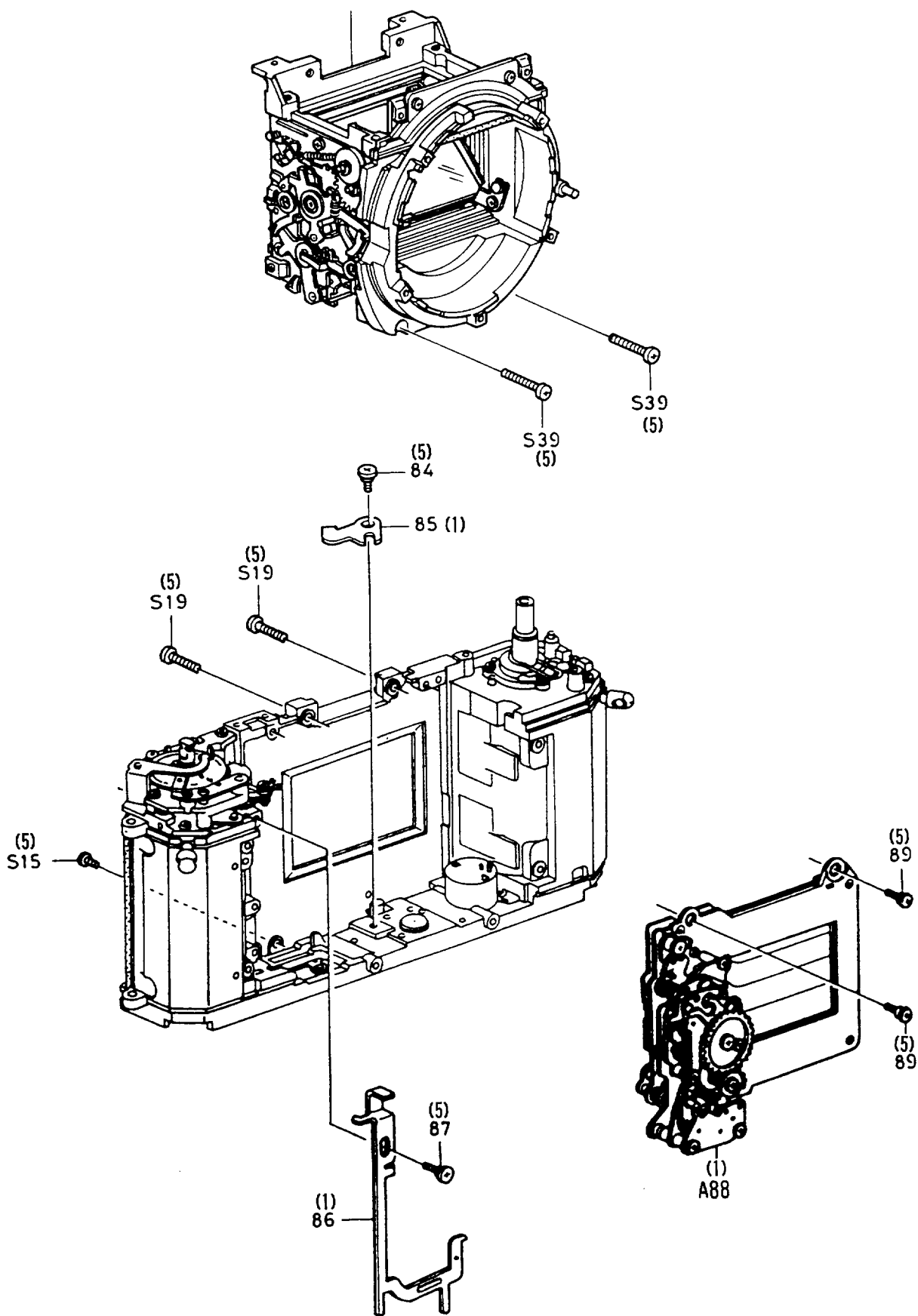


Fig. 4

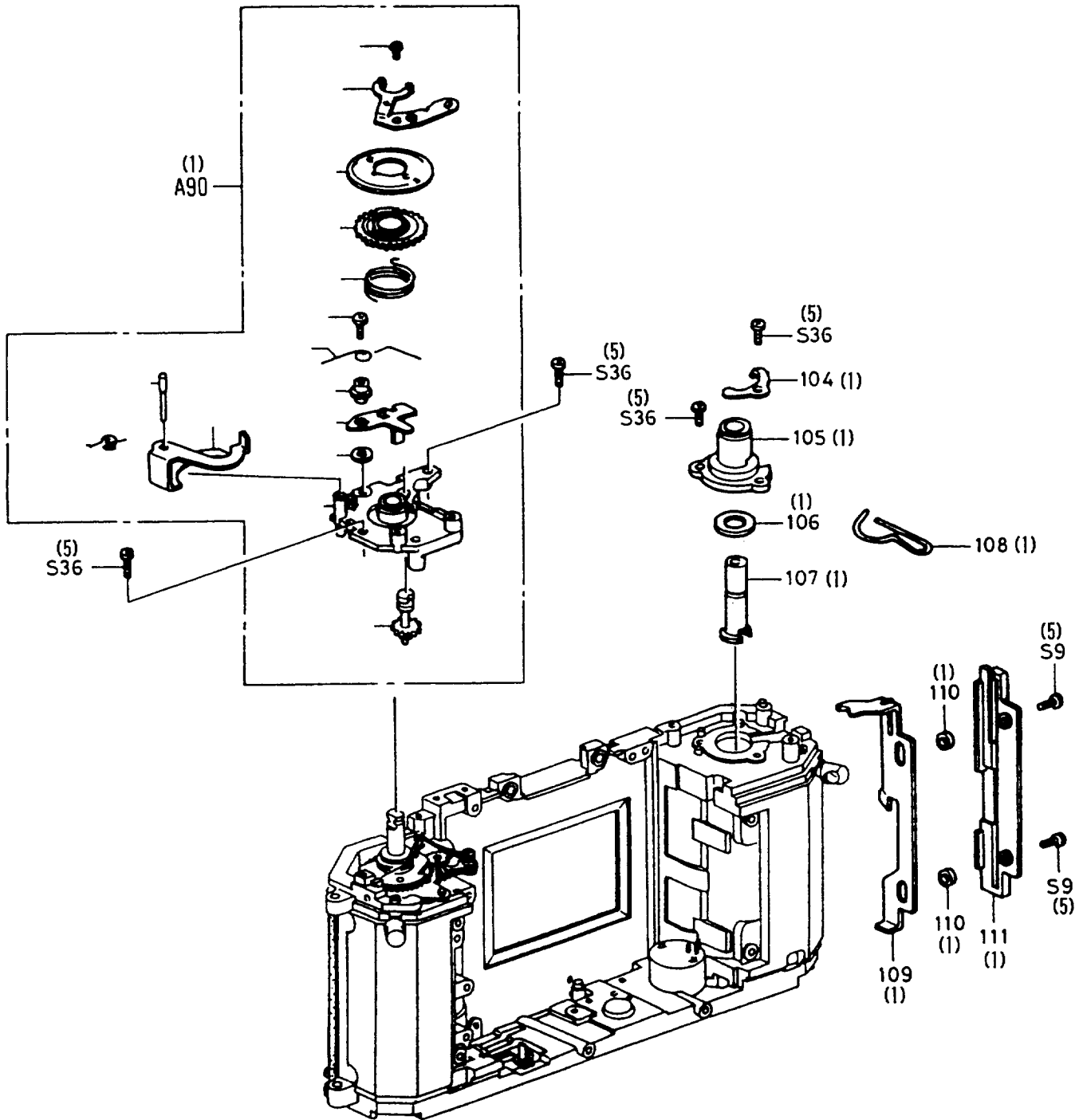
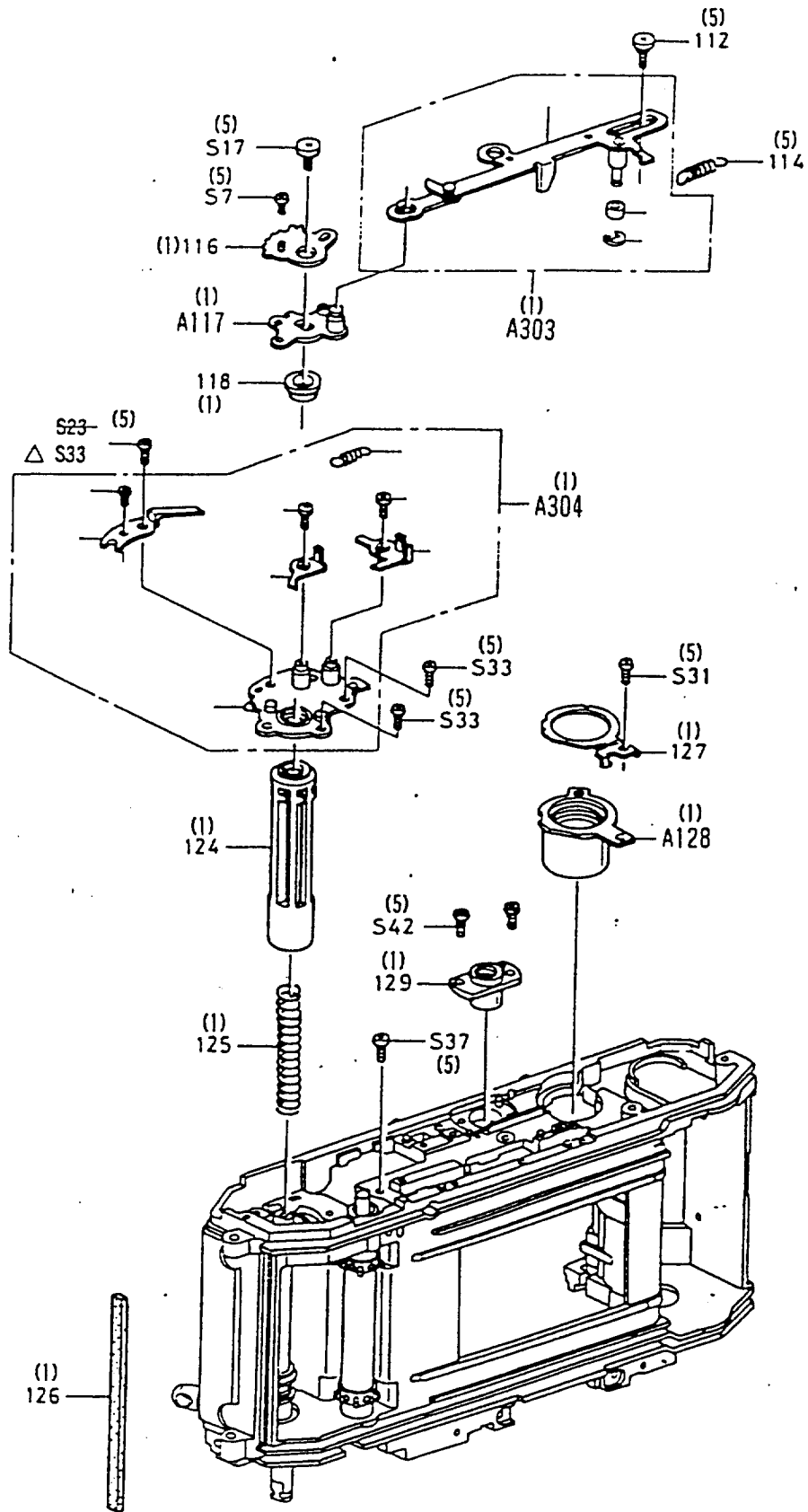


Fig. 5



SEP.17.1996

Fig. 6

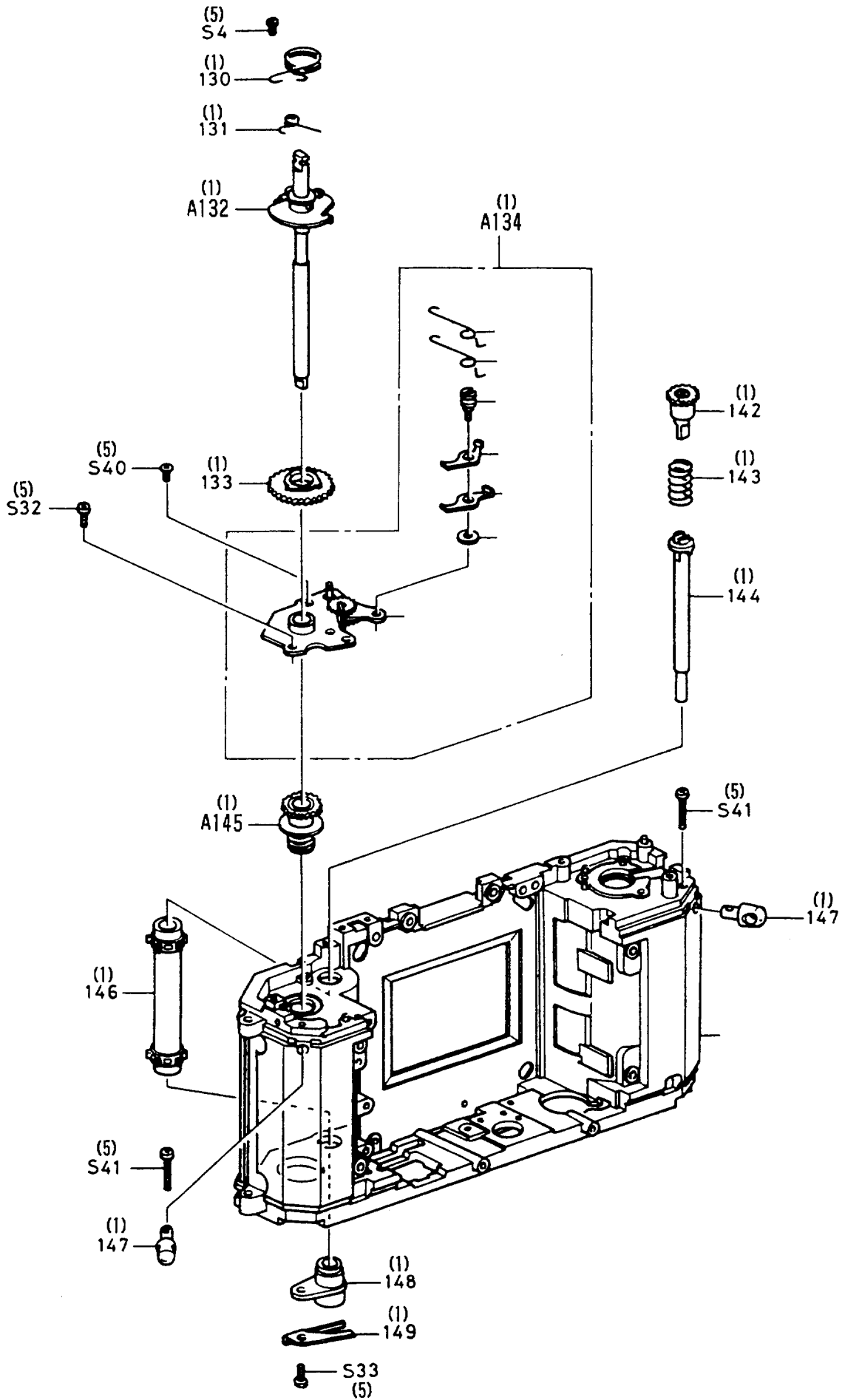
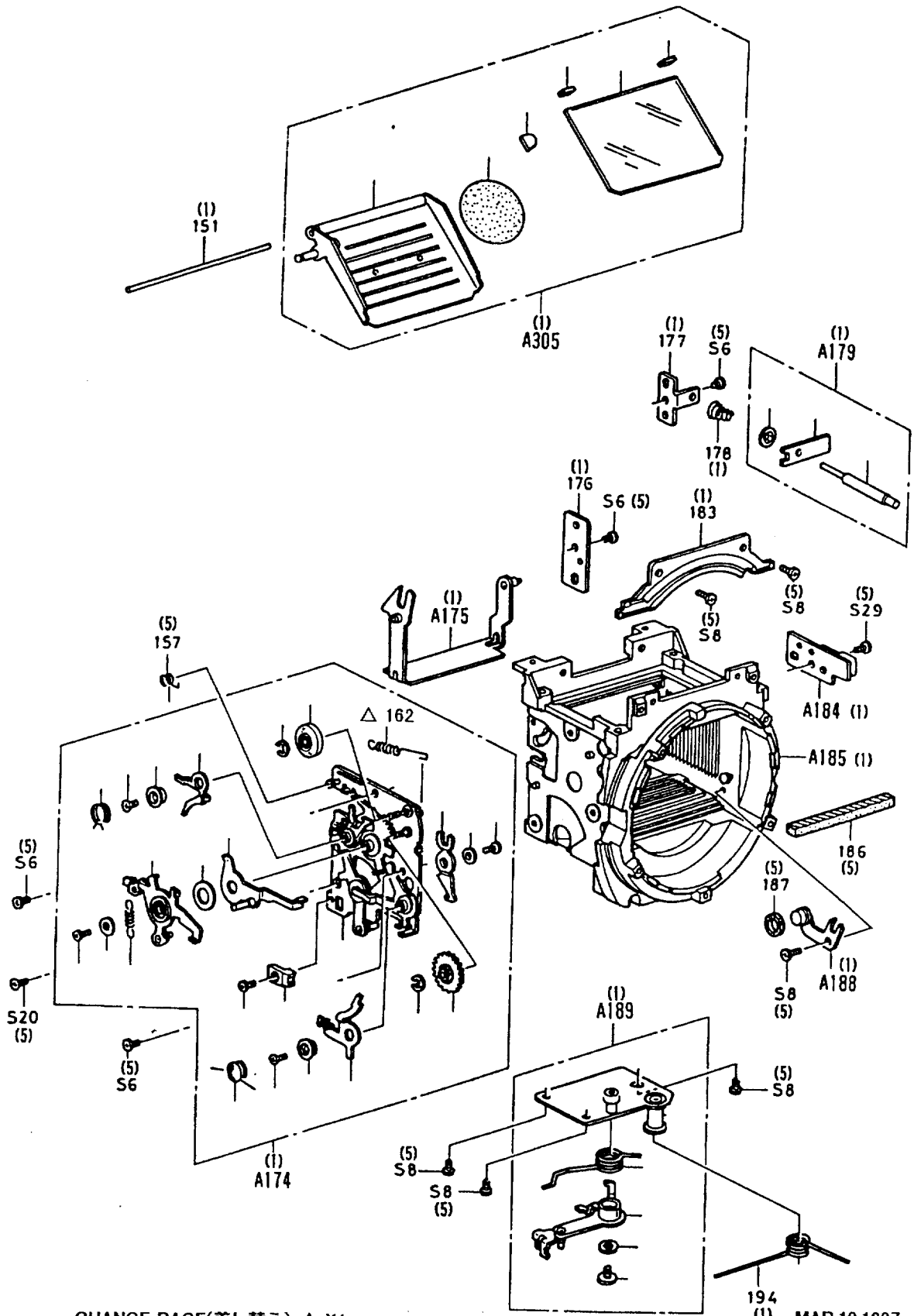


Fig. 7

(1)
A83

FAA31051-R. 3377. A



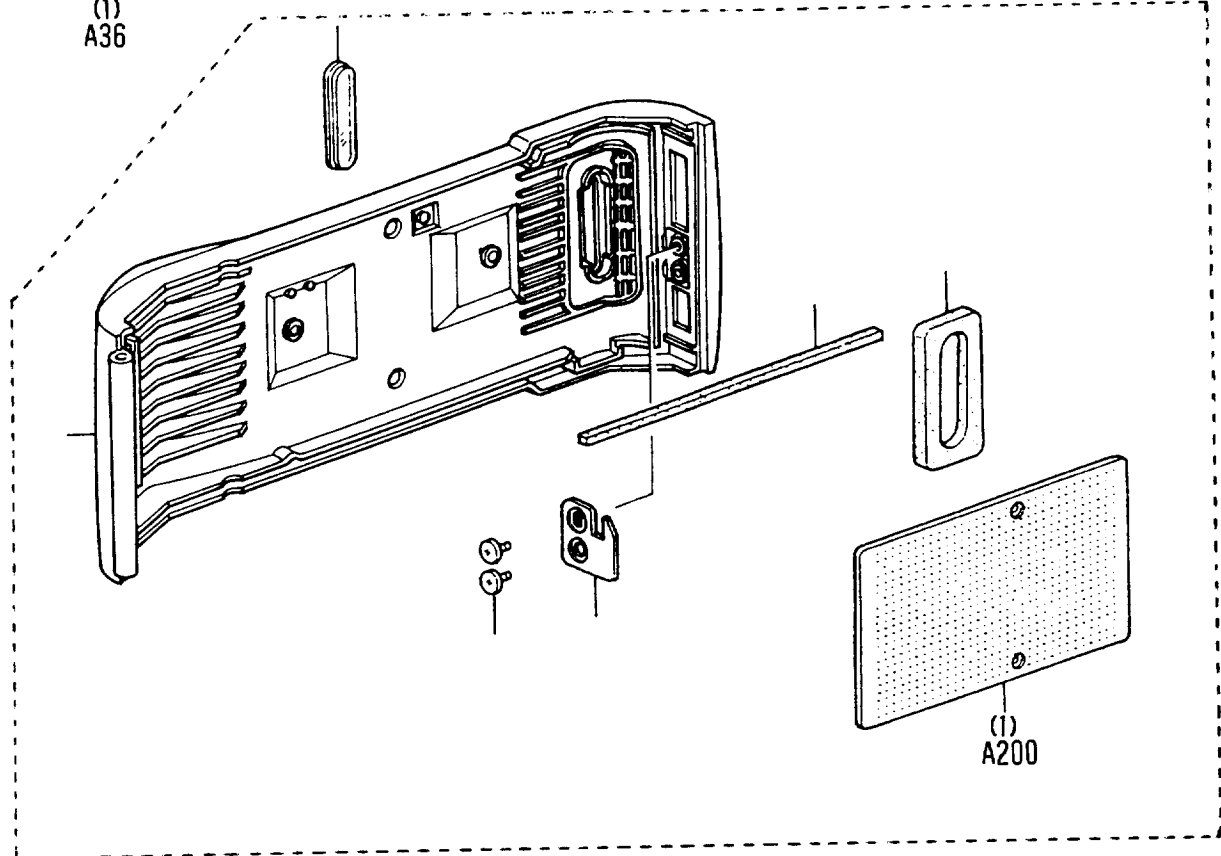
CHANGE PAGE(差し替え) △ X1

MAR.10.1997

Fig. 8

2507/4/6

(1)
A36



(1)
A200

(1)
A302

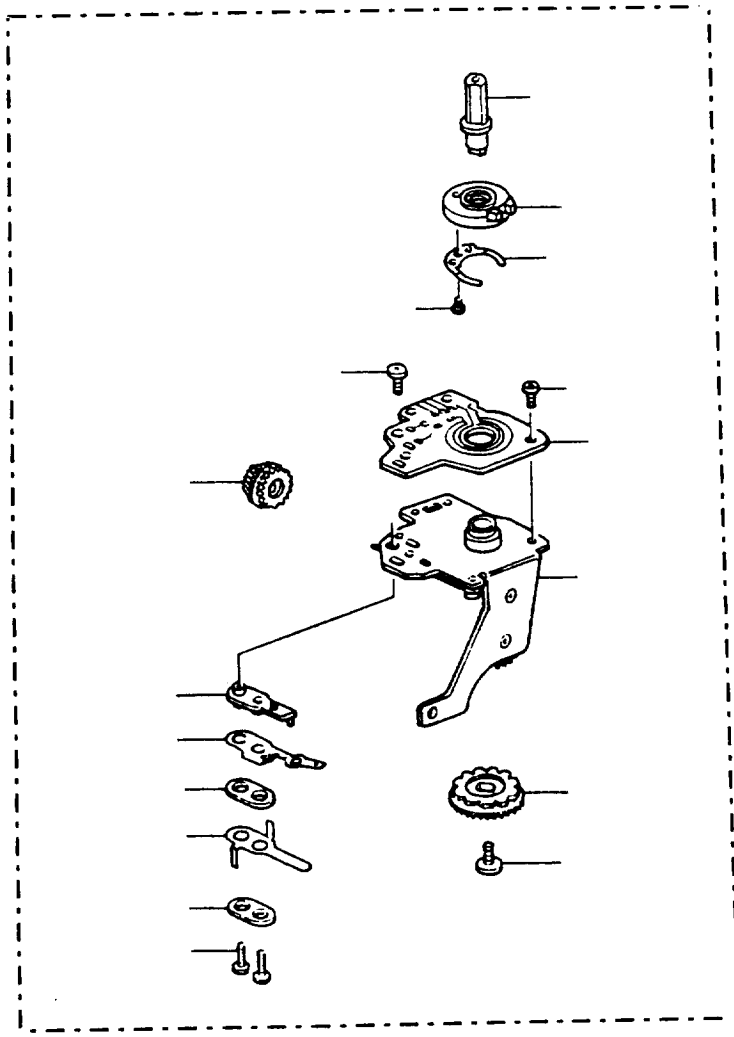


Fig. 9

部品表 Parts List

FAA31051-R. 3377. A

部品番号 Part No.	補助番号 Ckt No	名称 Name	1台分 個数 Qty Per Unit	部組品番号 Assembly	参照 図番 Fig. No	販売区分 Class. of Salabil- ity	備考 Remarks	要求単位 Order Unit Qty
1 (FAA31051-1)		巻上レバー Advance lever cover	1		1	○		1
2 (FAA31051-2)		巻上レバーワッシャー Advance lever washer	1		1	○		1
3 (FAA31051-3)		巻上レバーバネ Advance lever spring	1		1	○		1
4 (FAA31051-4)		巻上レバー板 Advance lever	1		1	○		1
5 (FAA31051-5)		リリースロック板 Release lock plate	1		1	○		1
6 (FAA31051-6)		巻上げレバーカム Advance lever cam	1		1	○		1
7 (FAA31051-7)		SDネジ Speed dial screw	1		1	○		5
8 (FAA31051-8)		SD銘板 Speed dial plate	1		1	○		1
9 (FAA31051-9)		ISO銘板 ISO plate	1		1	○		1
10 (FAA31051-10)		ISOバネ ISO spring	1		1	○		1
11 (FAA31051-11)		SDダイヤル Speed dial knob	1		1	○		1
12 (FAA31051-12)		ISOカラー ISO collar	1		1	○		1
13 (FAA31051-13)		ISOストッパー ISO stopper	1		1	○		1
32 (FAA31051-32)		グリップ接着テープA Grip rubber tape	1		1	○		1
33 (FAA31051-33)		グリップゴム Grip rubber	1		1	○		1

部品表 Parts List

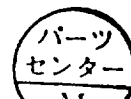
FAA31051-R. 3377. A

部品番号 Part No.	補助番号 Ckt No	名称 Name	1台分 個数 Qty Per Unit	部組品番号 Assembly	参照 図番 Fig. No	販売区分 Class. of Salabil- ity	備考 Remarks	要求単位 Order Unit Qty
34 (FAA31051-34)		右ラバー接着テープA Grip rubber tape	1		1	○		1
35 (FAA31051-35)		右ラバー Grip rubber	1		1	○		1
37 (FAA31051-37)		圧板保護シート Protect sheet	1		2	○		1
38 (FAA31051-38)		蝶番軸 Back door shaft	1		2	○		1
39 (FAA31051-39)		下カバー Bottom cover	1		2	○		1
42 (FAA31051-42)		絞込みレバー Preview lever	1		2	○		1
53 (FAA31051-53)		セルフレバー Self timer lever	1		2	○		1
54 (FAA31051-54)		セルフレバープレート Self lever plate	1		2	○		1
55 (FAA31051-55)		絞りブラシ Brush	1		2	○		1
56 (FAA31051-56)		絞り環 Diaphragm ring	1		2	○		1
△ 57 (FAA31051-57)		絞りスプリング Spring	1	A-41	2	○△	RP-9540	1
58 (FAA31051-58)		絞り連動環 Diaphragm actuating ring	1		2	○		1
62 (FAA31051-62)		プリズムモルト Prism sponge	1		3	○		5
63 (FAA31051-63)		プリズム押えパネ (A) Prism holder (A)	1		3	○		1
64 (FAA31051-64)		ペンタプリズム Penta prism	1		3	○		1

RP-1NF. NO. 9540

Change page (差し替え) △×1

May. 8. 1995



部品表 Parts List

FAA31051-R. 3377. B

部品番号 Part No.	補助番号 Ckt No	名 称 Name	1台分 個 数 Qty Per Unit	部組品番号 Assembly	参照 図番 Fig. No.	販売区分 Class. of Salabil- ity	備 考 Remarks	要求単位 Order Unit Qty
6 5 (FAA31051-65)		プリズム押えバネ (B) Prism holder (B)	1		3	○		1
6 6 (FAA31051-66)		シャッター遮光モルト Shutter light baffle sponge	1		3	○		1
6 9 (FAA31051-69)		ファインダーマスク Finder masc	1		3	○		1
7 0 (FAA31051-70)		プリズム台 Prism base	1		3	○		1
△ 7 1 (FAA31051-71)		フレネル Fresnel lens	1		3	○	RP-9607	1
△ 7 1-1 (FAA31051-71-1)		フレネル Fresnel lens	1		3	○	RP-9607	1
7 2 (FAA31051-72)		フレネル押え Fresnel lens holder	1		3	○		1
8 4 (FAA31051-84)		セットレバーAネジ Screw	1		4	○		5
8 5 (FAA31051-85)		セットレバーA Set lever A	1		4	○		1
8 6 (FAA31051-86)		リリース板 Release plate	1		4	○		1
8 7 (FAA31051-87)		リリース板ネジ Screw	1		4	○		5
8 9 (FAA31051-89)		シャッター止めネジ Screw	2		4	○		5
1 0 4 (FAA31051-104)		裏蓋開閉バネ Back door locking spring	1		5	○		1
1 0 5 (FAA31051-105)		巻戻し軸受 Rewind shaft base	1		5	○		1
1 0 6 (FAA31051-106)		巻戻し軸カラー Rewind shaft collar	1		5	○		1
1 0 7 (FAA31051-107)		巻戻し軸 Rewind shaft	1		5	○		1

Change page (差し替え) △×2

FEB. 26. 1996



部品表 Parts List

FAA31051-R. 3377. A

部品番号 Part No.	補助番号 Ckt No	名称 Name	1台分 個数 Qty Per Unit	部組品番号 Assembly	参照 図番 Fig. No.	販売区分 Class. of Salabil- ity	備考 Remarks	要求単位 Order Unit Qty
108 (FAA31051-108)		巻戻し軸バネ Rewind shaft spring	1		5	○		1
109 (FAA31051-109)		開閉鍵板 Back door locking plate	1		5	○		1
110 (FAA31051-110)		開閉鍵板カラー Locking plate collar	2		5	○		1
111 (FAA31051-111)		蓋止めカバー Locking plate cover	1		5	○		1
112 (FAA31051-112)		チャージレバーネジ Screw	1		6	○		5
114 (FAA31051-114)		チャージレバースプリング Spring	1		6	○		5
116 (FAA31051-116)		チャージ板 Charge plate	1		6	○		1
118 (FAA31051-118)		チャージ板カラー Charge plate collar	1		6	○		1
124 (FAA31051-124)		スプール Spool	1		6	○		1
125 (FAA31051-125)		スプール内バネ Spool inner spring	1		6	○		1
126 (FAA31051-126)		遮光モルト Light baffle sponge	1		6	○		1
127 (FAA31051-127)		電池アース接片 Battery cap contact plate	1		6	○		1
129 (FAA31051-129)		三脚座 Tripod socket	1		6	○		1
130 (FAA31051-130)		巻上レバー戻しバネ Advance spring	1		7	○		1
131 (FAA31051-131)		巻上爪バネ Advance claw spring	1		7	○		1

部品表 Parts List

FAA31051-R. 3377. A

部品番号 Part No.	補助番号 Ckt No	名称 Name	1台分 個数 Qty Per Unit	部組品番号 Assembly	参照 図番 Fig. No.	販売区分 Class. of Salabil- ity	備考 Remarks	要求単位 Order Unit Qty
133 (FAA31051-133)		巻上歯車 Advance gear	1		7	○		1
142 (FAA31051-142)		スプロケットギア Sprocket gear	1		7	○		1
143 (FAA31051-143)		スプロケットバネ Sprocket spring	1		7	○		1
144 (FAA31051-144)		スプロケット軸 Sprocket shaft	1		7	○		1
146 (FAA31051-146)		スプロケット Sprocket	1		7	○		1
147 (FAA31051-147)		吊環 Neck strap tug	2		7	○		1
148 (FAA31051-148)		スプロケット軸受 Sprocket shaft bearing	1		7	○		1
149 (FAA31051-149)		スプロケット解除バネ Sprocket release spring	1		7	○		1
151 (FAA31051-151)		ミラー軸 Mirror holder shaft	1		8	○		1
157 (FAA31051-157)		ミラーバネ Mirror spring	1		8	○		5
△ 162 (FAA31051-162)		ガバナバネ GOVERNOR SPRING	1		8	○	RP-9707	5
176 (FAA31051-176)		遮光板受 Light baffle plate base	1		8	○		1
177 (FAA31051-177)		Lピン受 L pin base	1		8	○		1
178 (FAA31051-178)		レンズロックバネ Spring	1		8	○		1
183 (FAA31051-183)		F-F0 PCB F-F0 PCB	1		8	○		1
186 (FAA31051-186)		ミラー受モルト Mirror shock absorber	1		8	○		5

CHANGE PAGE(差し替え) △×1

9707-3/16

MAR. 10. 1997

部品表 Parts List

FAA31051-R. 3377. B

部品番号 Part No.	補助番号 Ckt No	名称 Name	1台分 個数 Qty Per Unit	部組品番号 Assembly	参照 図番 Fig. No	販売区分 Class. of Salabil- ity	備考 Remarks	要求単位 Order Unit Qty
S 1 (FAA31051-S1)		Screw	1		2	○		5
S 4 (FAA31051-S4)		Screw	1		7	○		5
S 6 (FAA31051-S6)		Screw	4		8	○		5
S 7 (FAA31051-S7)		Screw	1		6	○		5
S 8 (FAA31051-S8)		Screw	6		8	○		5
S 9 (FAA31051-S9)		Screw	1		5	○		5
S 1 2 (FAA31051-S12)		Screw	4		1	○		5
S 1 4 (FAA31051-S14)		Screw	3		1 2	○		5
S 1 5 (FAA31051-S15)		Screw	1		4	○		5
S 1 7 (FAA31051-S17)		Screw	2		2 6	○		5
S 1 8 (FAA31051-S18)		Screw	5		2	○		5
S 1 9 (FAA31051-S19)		Screw	6		3 4	○		5
S 2 0 (FAA31051-S20)		Screw	1		8	○		5
△ S 2 3 (FAA31051-S23)		Screw	1		6	○	RP-9616	5
S 2 5 (FAA31051-S25)		Screw	4		3	○		5



部品表 Parts List

FAA31051-R. 3377. A

部品番号 Part No.	補助番号 Ckt No	名称 Name	1台分 個数 Qty Per Unit	部組品番号 Assembly	参照 図番 Fig. No	販売区分 Class. of Salabil- ity	備考 Remarks	要求単位 Order Unit Qty
S 2 9 (FAA31051-S29)		Screw	1		8	○		5
S 3 0 (FAA31051-S30)		Screw	4		2	○		5
S 3 1 (FAA31051-S31)		Screw	1		6	○		5
S 3 2 (FAA31051-S32)		Screw	3		3 7	○		5
S 3 3 (FAA31051-S33)		Screw	5		6 7	○		5
S 3 4 (FAA31051-S34)		Screw	2		3	○		5
S 3 5 (FAA31051-S35)		Screw	3		3	○		5
S 3 6 (FAA31051-S36)		Screw	6		2 5	○		5
S 3 7 (FAA31051-S37)		Screw	1		6	○		5
S 3 8 (FAA31051-S38)		Screw	1		1	○		5
S 3 9 (FAA31051-S39)		Screw	2		4	○		5
S 4 0 (FAA31051-S40)		Screw	2		3 7	○		5
S 4 1 (FAA31051-S41)		Screw	2		7	○		5
S 4 2 (FAA31051-S42)		Screw	2		6	○		5

部組品表 Assembly List

FAA31051-R. 3377. A



部組番号 Part No.	補助番号 Ckt No.	名 称 Name	1台分 個 数 Pcs. Per Unit	大部組品番号 Main assembly NO.	参照 図番 Fig. No.	備 考 Remarks	要求単位 Qty per order
A 1 4 (FAA31051-A14)		上カバー組 Top cover unit	1		1		1
A 2 7 (FAA31051-A27)		巻戻しノブ組 Rewind knob unit	1		1		1
A 3 6 (FAA31051-A36)		裏蓋組 Back door unit	1		2		1
A 4 0 (FAA31051-A40)		電池キャップ組 Battery cap unit	1		2		1
A 4 1 (FAA31051-A41)		前カバー組 Front cover unit	1		2		1
A 6 1 (FAA31051-A61)		メインFPC Main FPC unit	1		3		1
A 8 0 (FAA31051-A80)		接眼枠組 Eye piece frame unit	1		3		1
A 8 8 (FAA31051-A88)		シャッター組 Sutter unit	1		4		1
A 9 0 (FAA31051-A90)		枚数計組 Film counter unit	1		5		1
A 1 1 7 (FAA31051-A117)		チャージ補助板組 Charge plate base unit	1		6		1
A 1 2 8 (FAA31051-A128)		電池ケース組 Battery case unit	1		6		1
A 1 3 2 (FAA31051-A132)		巻上軸 Advance shaft unit	1		7		1
A 1 3 4 (FAA31051-A134)		巻上地板 Winding gear base unit	1		7		1
A 1 4 5 (FAA31051-A145)		スプールギア組 Spool gear unit	1		7		1
A 1 7 4 (FAA31051-A174)		作動基板組 Mirror operating base unit	1		8		1

部組品表 Assembly List

FAA31051-R. 3377. A

部組番号 Part No.	補助番号 Ckt No.	名称 Name	1台分 個数 Pcs. Per Unit	大部組品番号 Main assembly NO.	参照 図番 Fig. No.	備考 Remarks	要求単位 Qty per order
A175 (FAA31051-A175)		遮光板組 Light baffle plate unit	1		8		1
A179 (FAA31051-A179)		ロックピン組 Lock pin unit	1		8		1
A184 (FAA31051-A184)		測光スイッチ Metering sw unit	1		8		1
A185 (FAA31051-A185)		ミラーボックス組 Mirror box unit	1		8		1
A188 (FAA31051-A188)		ミラー調整板 Mirror angle adjust unit	1		8		1
A189 (FAA31051-A189)		SL地板組 SL base unit	1		8		1
A200 (FAA31051-A200)		圧板組 Pressure plate unit	1	A36	9		1
A301 (FAA31051-A301)		表示LED組 LED unit	1		3		1
A302 (FAA31051-A302)		管制部組 Shutter speed base unit	1		3		1
A303 (FAA31051-A303)		チャージレバー組 Charge lever unit	1		6		1
A304 (FAA31051-A304)		巻上軸受下組 Advance shaft base unit	1		6		1
A305 (FAA31051-A305)		ミラーホルダー組 Mirror holder unit	1		8		1
△ P-1 (FAA31051-P-1)		ストラップ Strap	1			RP-9624	1

Change Page (差し替え) △×1

作成承認印	配布許可印
	

FMI10

FAA 31051

REPAIR MANUAL

Nikon | NIKON CORPORATION
Tokyo, Japan

Copyright © 1995 by Nikon Corporation.
All Rights Reserved.

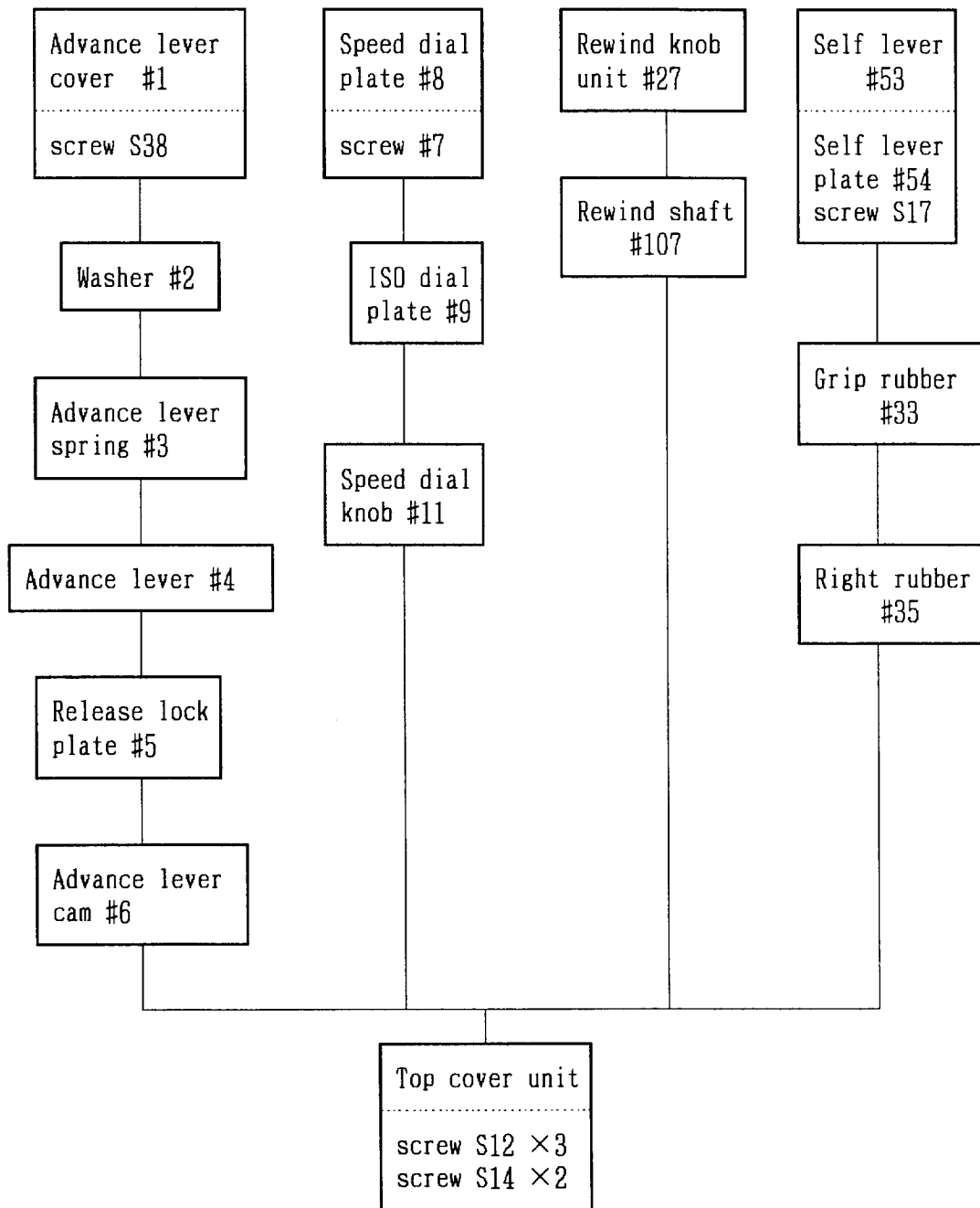
SPECIFICATIONS

Type of camera	35mm single-lens reflex(SLR) focal plane shutter
Picture format	24mm × 36mm
Usable film	Any cartridge-type 35mm film
Standard lens	35-70/ F3.5~4.8 as standard
Lens mount	Nikon F mount
Shutter	Vertically traveling metal M 1/2000~1S 、 B
Viewfinder	Eyelevel pentaprism type ; 92% ± 2% frame coverage
Dioptr	-1 ± 0.4 dtp
Magnification	0.84 × (50mm, ∞)
Viewfinder display	Three LEDs lights up for exposur metering.
Reflex mirror	Automatic instant-return type
Exposure metering	TTL Center-weighted full aperture Exposure metering
Metering range	EV2 ~ 19 (ISO 100, F2 、 1S ~ F/16 、 1/2000)
Film speed setting	ISO 25 ~ 3200
Exposure meter switch	Pr-release turns on or Exposure meter switch on
Flash sync	1/125 or lower
Multiple exposur	Via lever
Tripod	UNC 1/4
Power source	Silver-oxide battery (SR-44 × 2) Alkaline-manganese battery (LR-44 × 2)
Dimensions	Approx 13.9mm(W) × 86mm(H) × 53.0mm(D)
Weight	Approx 420g (body only)

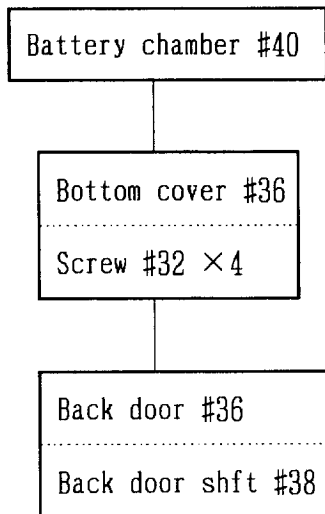
DISASSEMBLING PROCEDURE CHART

- Note ①. Disassembling should be started after batteries are removed.
 ②. Refer to "Exploded drawing" details on disassembling.
 ③. Be sure to learn how the lead wires are arranged.

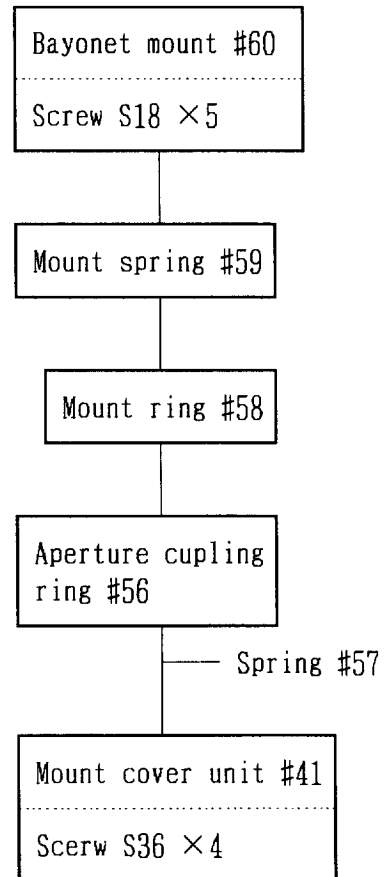
(1) TOP COVER...Fig.1.2



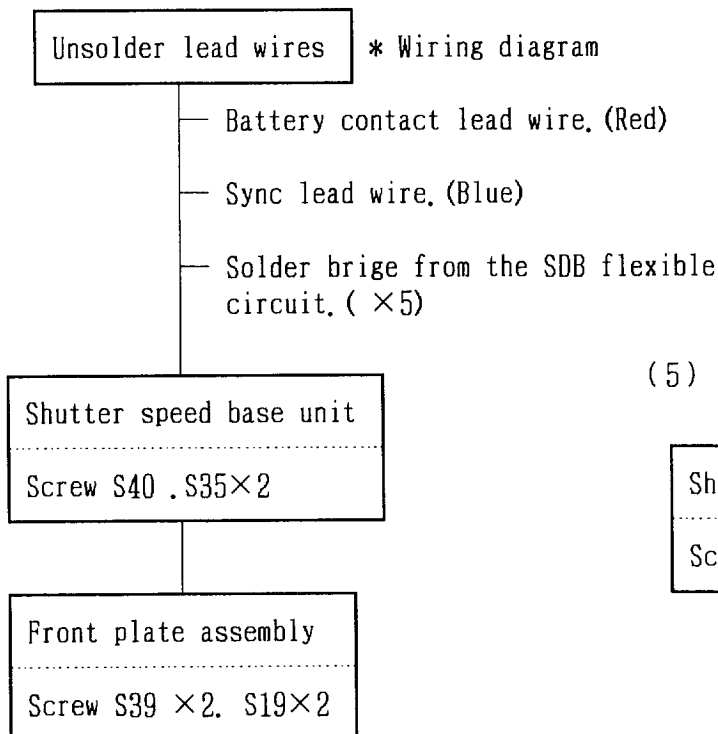
(2) BOTTOM COVER...Fig.2



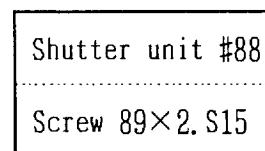
(3) BAYONET...Fig.2



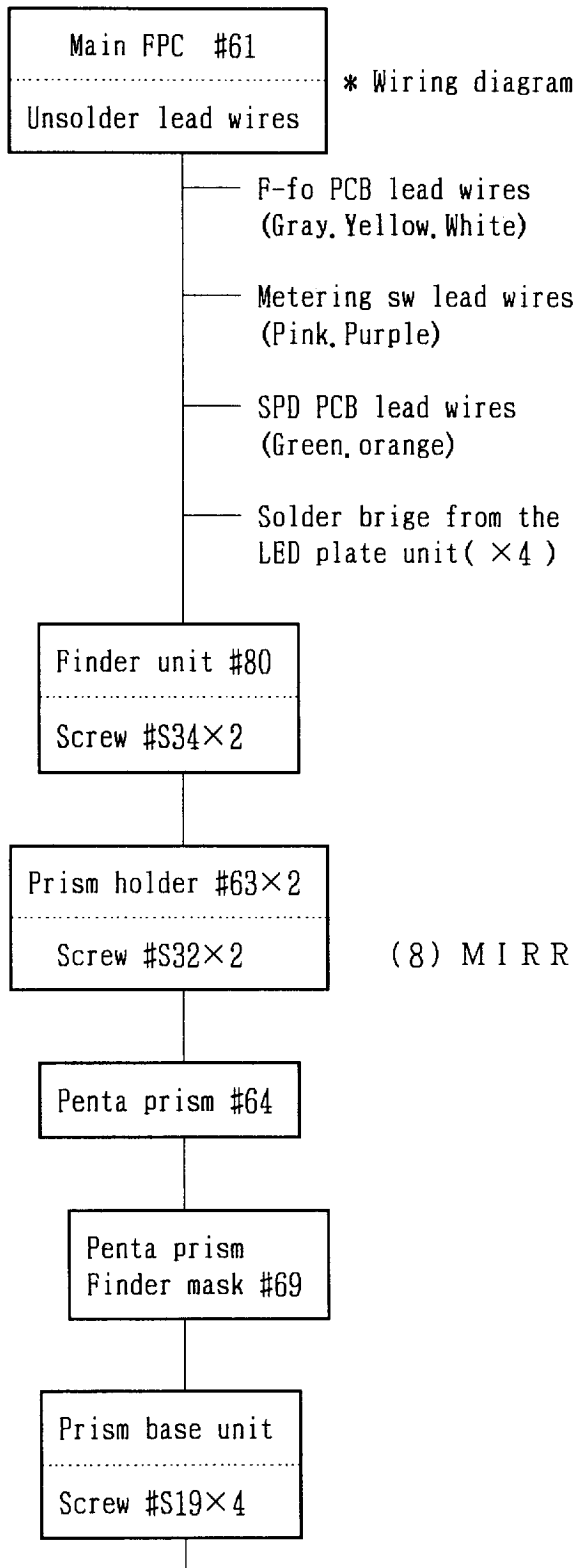
(4) FRONT PLATE...Fig.3.4



(5) SHUTTER...Fig.4

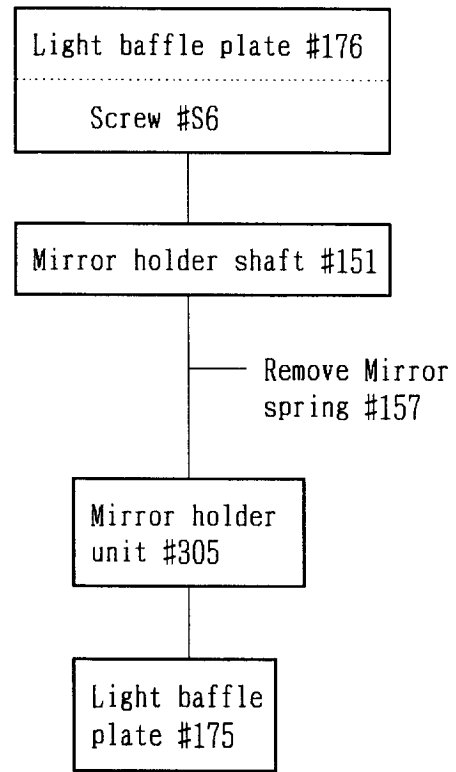


(6) PRISM BOX...Fig.3

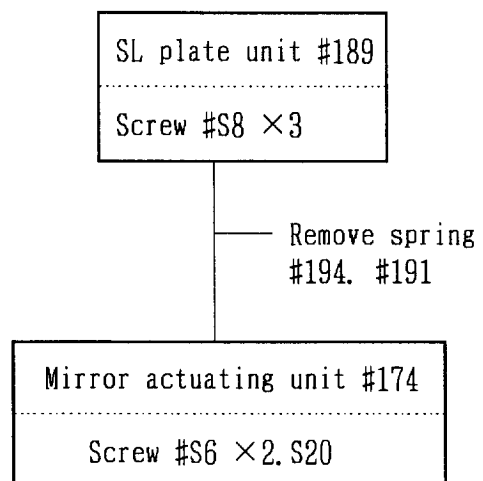


* LED plate and finder-screen is also disassembled.

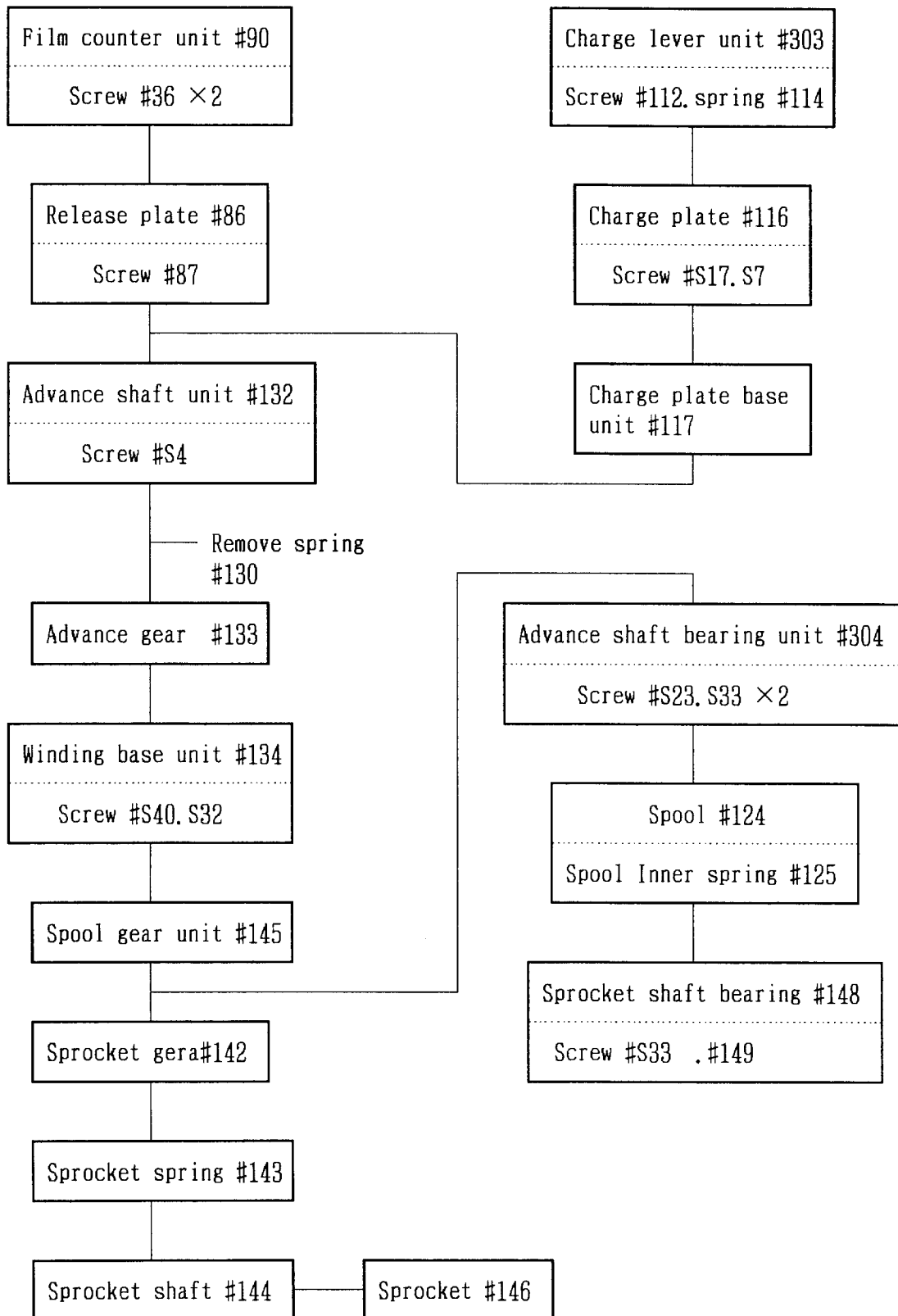
(7) MIRROR HOLDER...Fig.8



(8) MIRROR ACTUATING UNIT...Fig.8



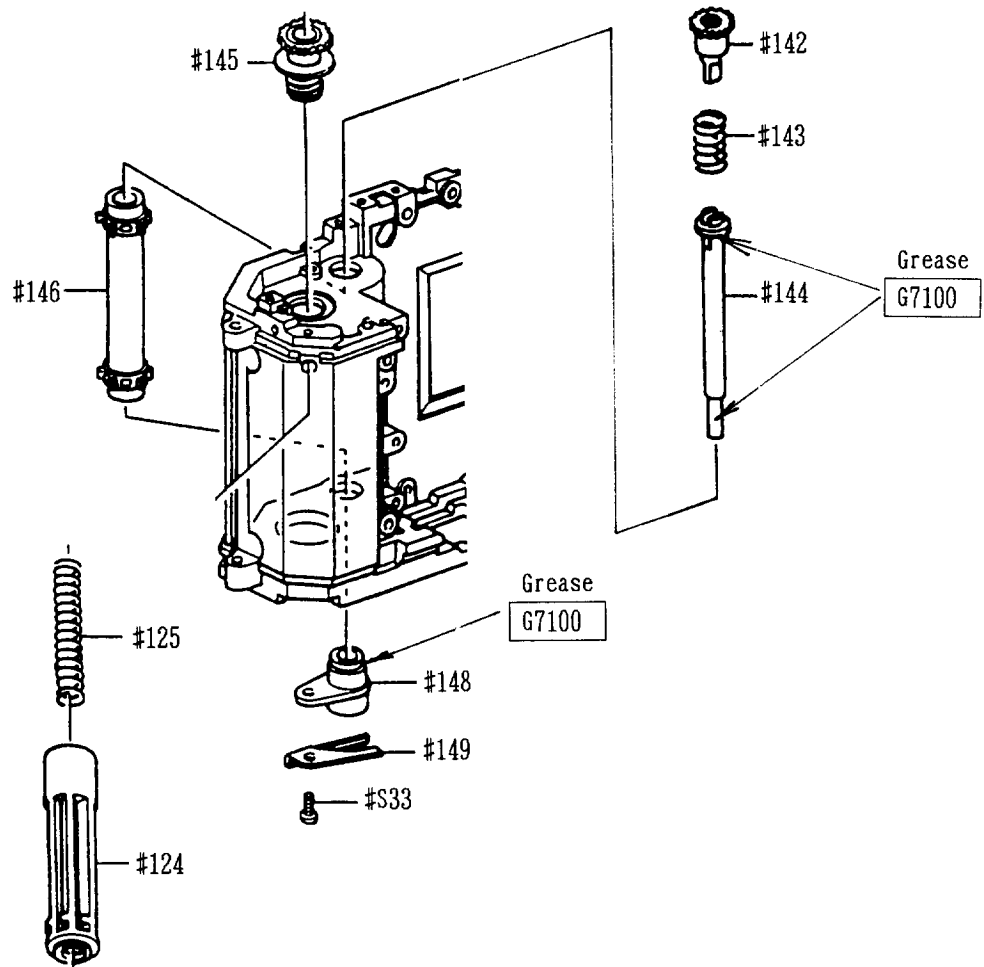
(9) SPOOL. SPROCKET...Fig.5.6.7



ASSEMBLING

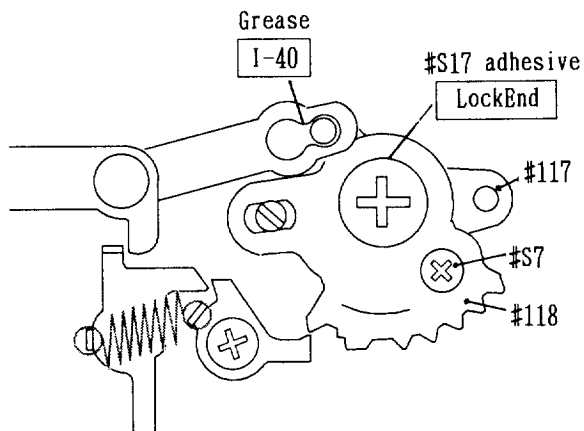
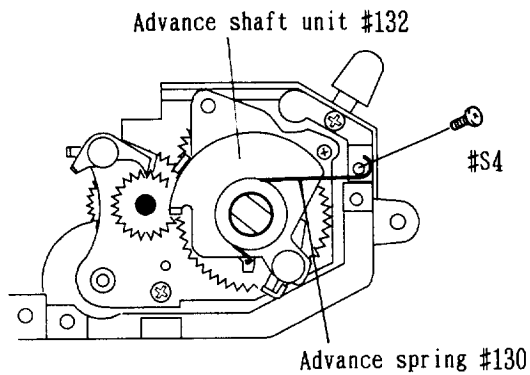
Note; Refer to "Exploded drawing" details on assembling.

Main body



1. Film take-up spool and sprocket

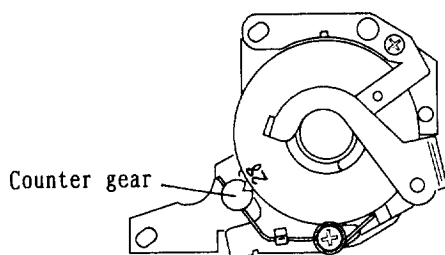
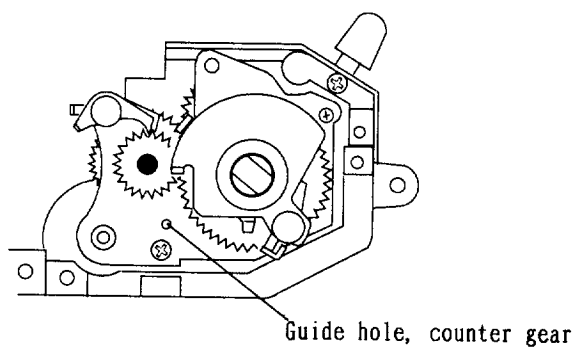
- (1) Attach sprocket #146 on the body and secure it with sprocket shaft bearing #148, spring #149 and screw #S33.
- (2) Attach film take-up spool #124 and spool internal spring #125 to the body. While securing them with film advance shaft bearing #304. (Screw #33x2 and #S23).
- (3) Attach film take-up spool gear #145 into the spool hole together.
- (4) After attaching film take-up spool shaft #144, sprocket spring #143 and sprocket gear #142, mount film advance upper base plate #134 and secure it. (Screw #S40) and #S32).
- (5) Apply oil I-40 on both sides of film advance gear #133.



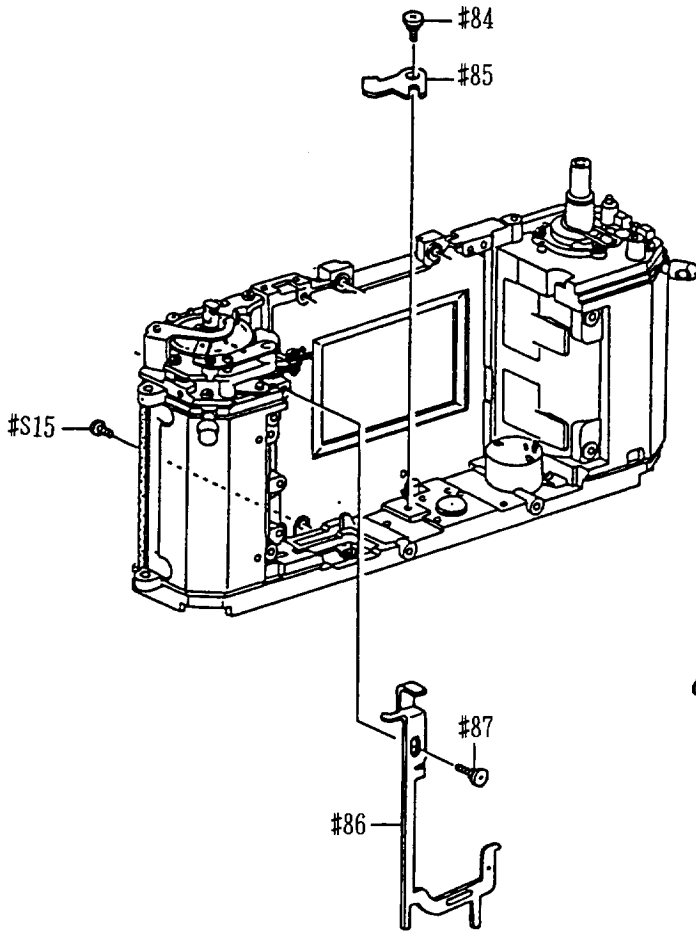
- (6) Apply oil G7100 to film advance shaft unit #132.
- (7) Attach film advance lever returning spring #130 as shown in the figure. (Screw S4)
- (8) Attach charging collar #118, charging auxiliary plate #117 and charging plate #116. (Screws S17, S7)
- (9) Apply oil I-40 to charging lever #307 and the sliding surface. (Screw #112, spring #114)

2. Frame counter

Mounting procedures



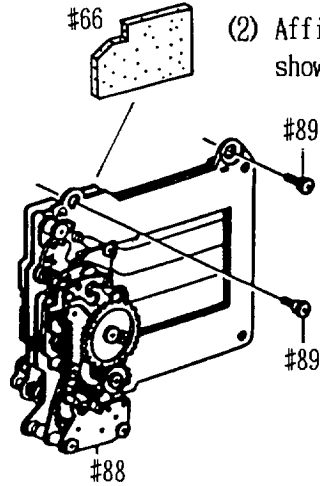
- (1) Set the film advance lever tentatively.
- (2) Wind the film advance lever fully.
- (3) Set film advance shaft unit #132 to the position shown in the figure.
- (4) Align frame counter unit #90 and frame counter scale "28" with the notch of the gear.
- (5) At this stage, attach the frame counter while aligning it with the hole of the film advance gear guide. (Screws S36x2)
- (6) Check to confirm if the frame counter works properly by winding the film advance lever several times.



3. Shutter

(1) Attach SL plate #85.
(Screws #89x2, #S15)

(2) Affix sponge #66 at the location as shown in the figure.

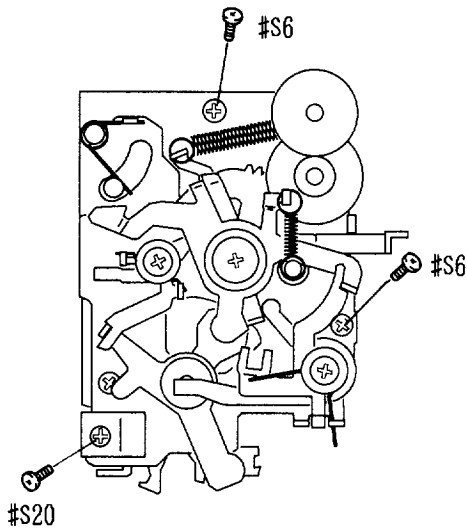


Front plate

4. Mirror unit

(1) Mount mirror holder #305 and light baffle plate, and secure them with mirror fixing shaft #151.

(2) Light baffle plate #176, screw #S6

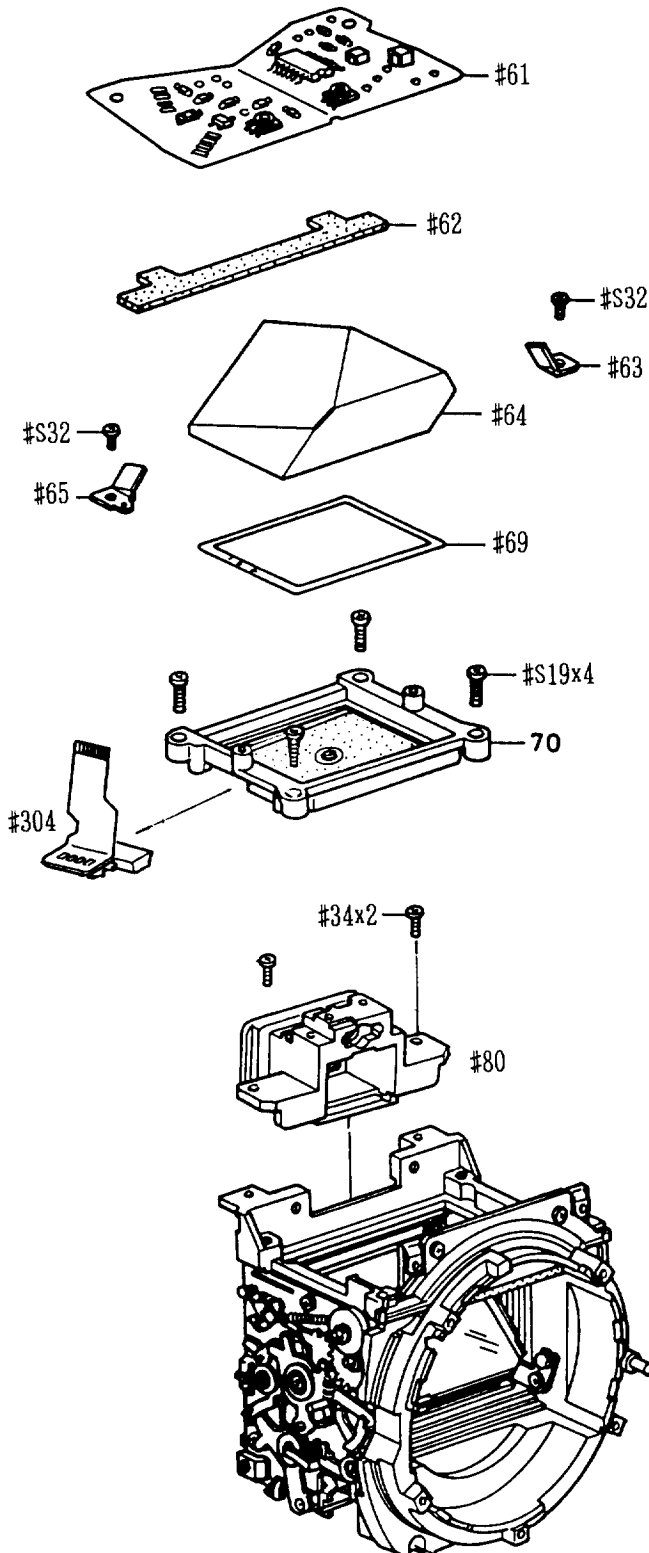


5. Mirror driving unit

(1) Operating base plate #174. Hook a spring at the location shown in the figure. (Screw #S6x2, #S20)

(2) SL plate #189. (Screws #S8x3)

6. Prism unit

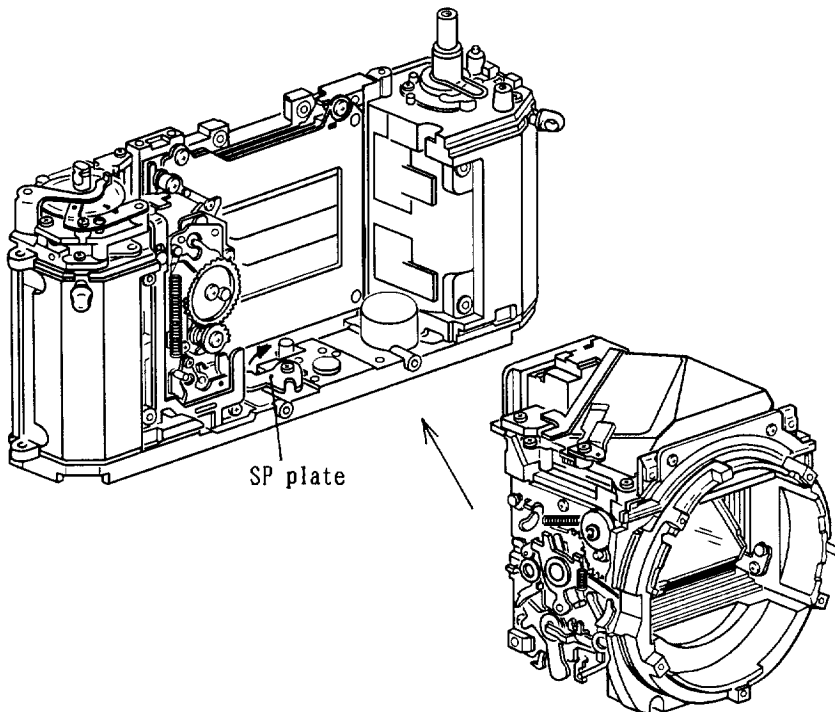


- (1) Prism stand unit (Screws #S19x4)
- (2) Prism frame #69
- (3) Prism #64
- (4) Prism securing plates #63x2
(Screws #S32x2)
- (5) Eyepiece frame unit #80
(Screws #S34x2)
- (6) When attaching LED base plate #304,
push it as far as it will go and
secure it using adhesive 551A.
- (7) Secure main PPC #61 with double
coated adhesive tape.

Attaching wires

- f-fo PCB (Gray, Yellow, White)
- Meter SW) (Pink, Purple)
- SPD PCB (Green, POrange)
- Soldering bridge
(LED base plates x4)

Mounting the front plate and the main body

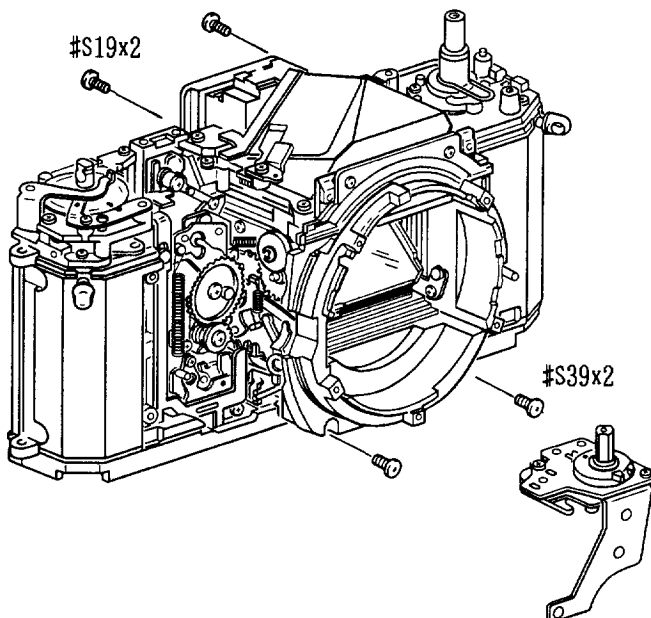


Procedures

- (1) Set the shutter on the main body side.
(Shutter setting)
- (2) Set the SL plate at the location shown in the figure.
- (3) Align the SL plate and notch with the setting lever on the front plate and mount.

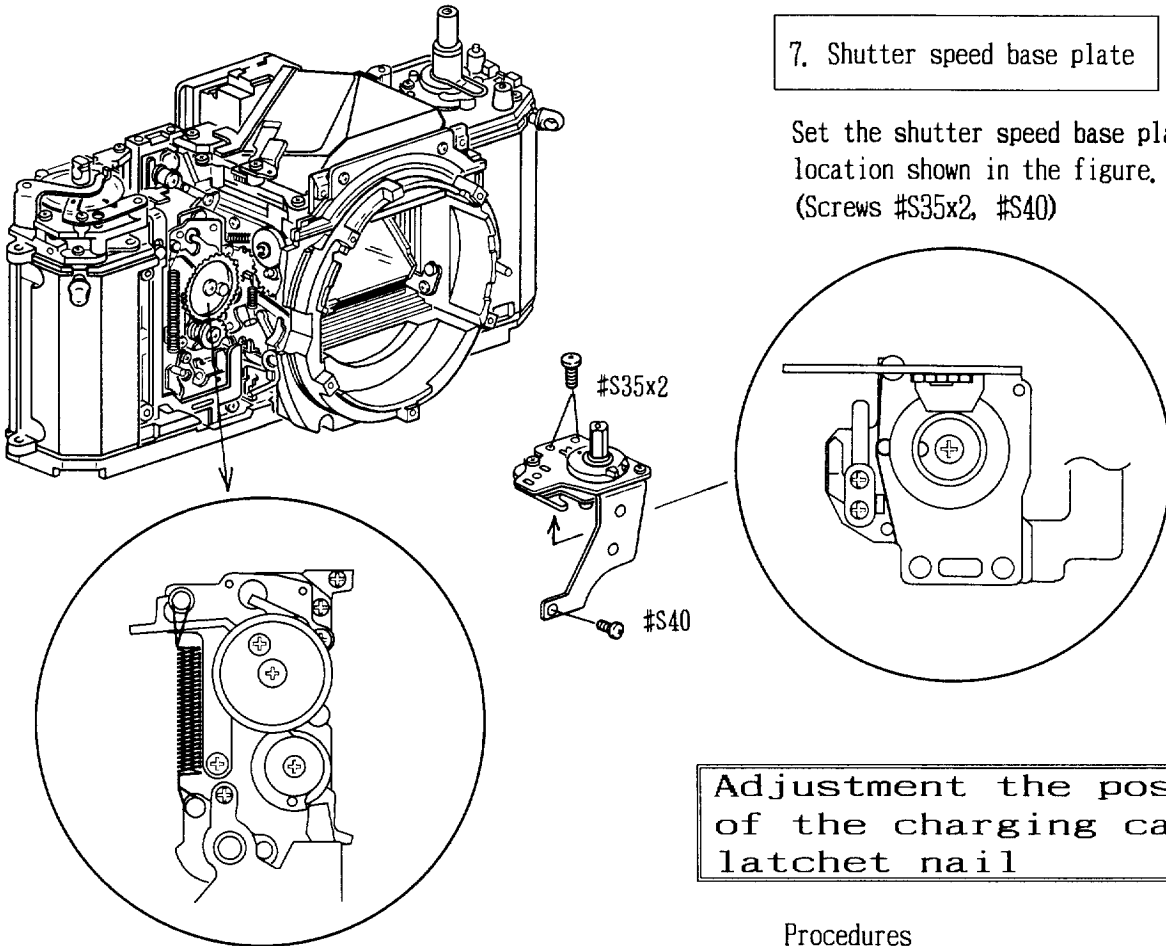
Note; Do not set the shutter on the front plate side.

- (4) Screws #S19x2, #S39x2
- (5) Set the shutter again.
- (6) When shutter can be released, the mounting has been completed.
- (7) If not, repeat the same procedures once again.



7. Shutter speed base plate

Set the shutter speed base plate at the location shown in the figure.
(Screws #S35x2, #S40)



Adjustment the position of the charging cam and latchet nail

Procedures

- (1) Set the camera in the film advance completion state,
- (2) Check to see if gap A between the charging lever and the latchet nail releasing lever is within a range of 0 to 0.3mm.

Adjustment

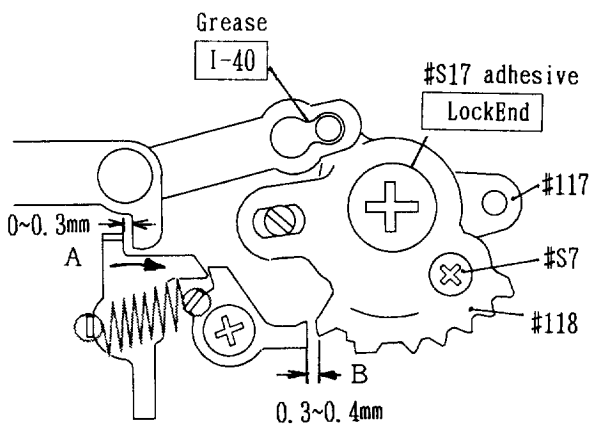
Bend the latchet nail releasing lever in the direction of the arrow.

- (3) At this stage, check to see if gap B between the latchet nail and charging cam is within a range of 0.3 to 0.4mm.

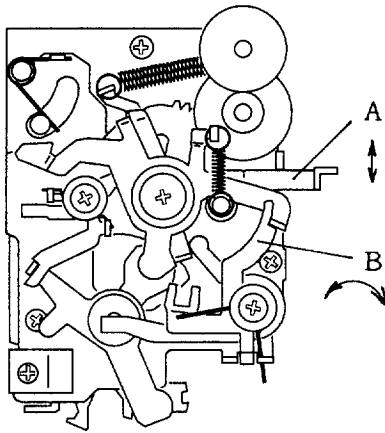
Adjustment

Unfasten screws #S17 and #S7, and rotate the eccentric screw.

- After adjustment, secure them with LockEnd B.



Adjustment height of aperture lever



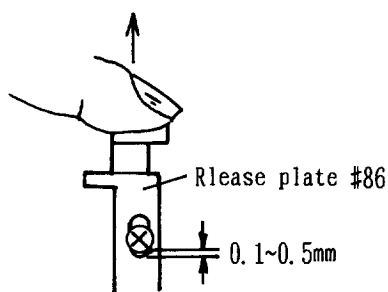
Standard value $3.1^{+0.1}$

Balance between before/after charge after 0.15 to 0.3mm

Adjustment procedures

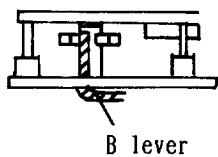
- (1) Bayonet spring #59, bayonet
- (2) Measure the height of the aperture lever near the center of the camera using tool (J18004).
- (3) If the standard value cannot be obtained, bend the mechanical latch plate B to adjust.
- (4) If there is still no difference in the height before and after the advancement of film, bend the aperture lever stopper A to adjust.

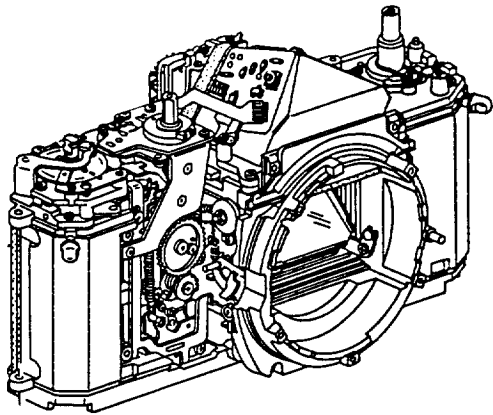
Adjusting mirror moving up position



- (1) Set the shutter speed dial to B (bulb), and hold shutter release plate #86.
- (2) Make sure that the mirror returns at the location as shown in the figure when releasing the hold slowly.
- (3) If the adjusted position is still out of the standard value, bend the lever B inside shutter unit.

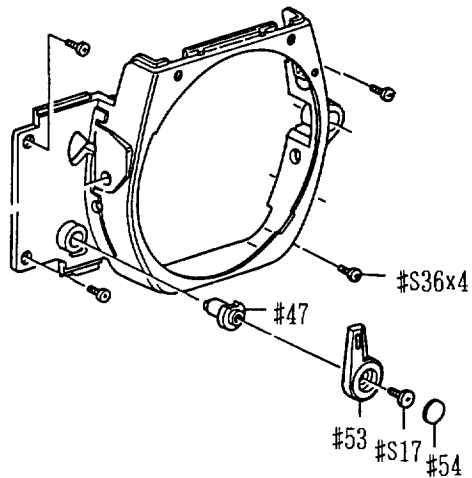
Upper shutter unit



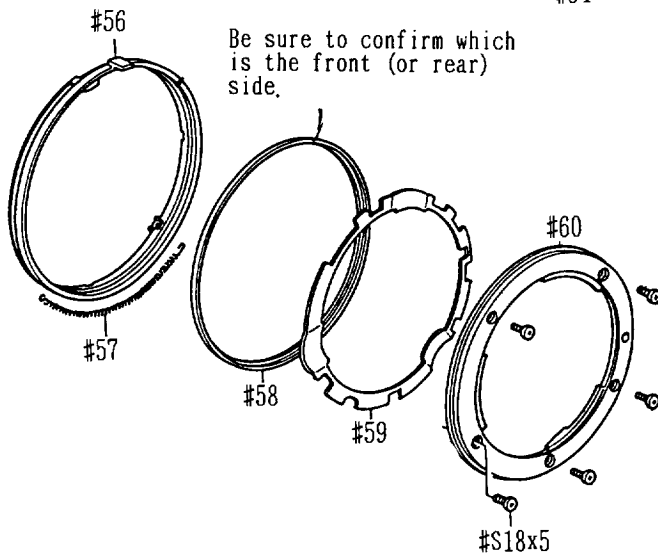


8. Bayonet

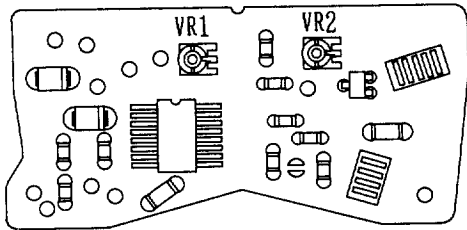
- (1) Mount MT cover unit #41 and aperture coupling ring #56 together.
- (2) Attach spring #57 into the hole on the aperture coupling ring.
(Screws #S36x4)
- (3) Attach a mount spring and a mount.
(Screws #S18x5)
- (4) Self-timer lever #53.
(Screws #S17)
- (5) Attaching cords



- Battery contact cord (Red)
- Sync cord (Blue)
- Soldering bridges x5



Adjusting meter accuracy



γ adjustment (EV15)

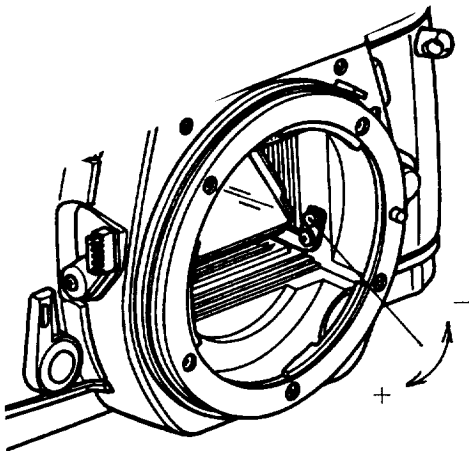
- (1) Using a 50mm f/1.4 lens with film speed set at ISO 100, set the shutter speed to 1/500 sec, and aperture to f/8, then adjust the VR1 so that the green LED comes on.

Shift adjustment (EV6)

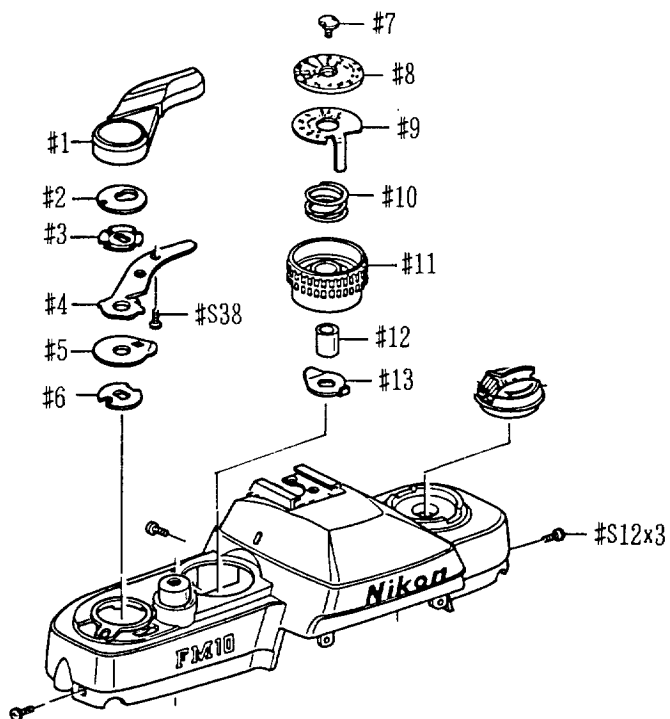
- (2) Likewise, set the shutter speed to 1/2 sec, aperture to f/5.6, then adjust the VR2 so that the green LED comes on.
- (3) Repeat the procedures (1) and (2) above.
- (4) Make an accuracy inspection on each light level.
 ※ Refer to the standard value for inspection.

Adjustment	Aperture	Shutter speed	Semi-fixed resistor
Gamma	f/8	1/500 sec.	VR1
Shift	f/5.6	1/2 sec.	VR2

Adjustment at infinity setting



- (1) Mount a 50mm f/1.4 standard lens on the camera and align the camera with collimator (J19001).
- (2) Look into the camera's viewfinder and check if the splits are correctly fit.
- (3) If not fit, rotate the hexagon nut to adjust as shown in the figure.
- (4) After adjustment, apply black paint on the hexagon nut.



9. Top cover

(1) Top cover unit #14

Screws #S14x2, #S12x3

(2) Shutter dial unit (Screw #7)

(3) Film advance lever unit

(4) Film rewind knob unit #27

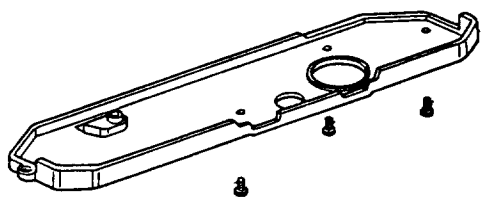
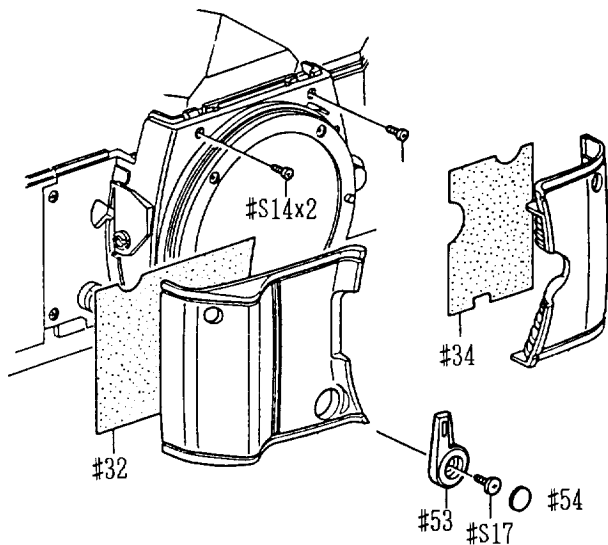
(5) Hand grip rubber #33, right rubber #35

(6) Self-timer lever #53

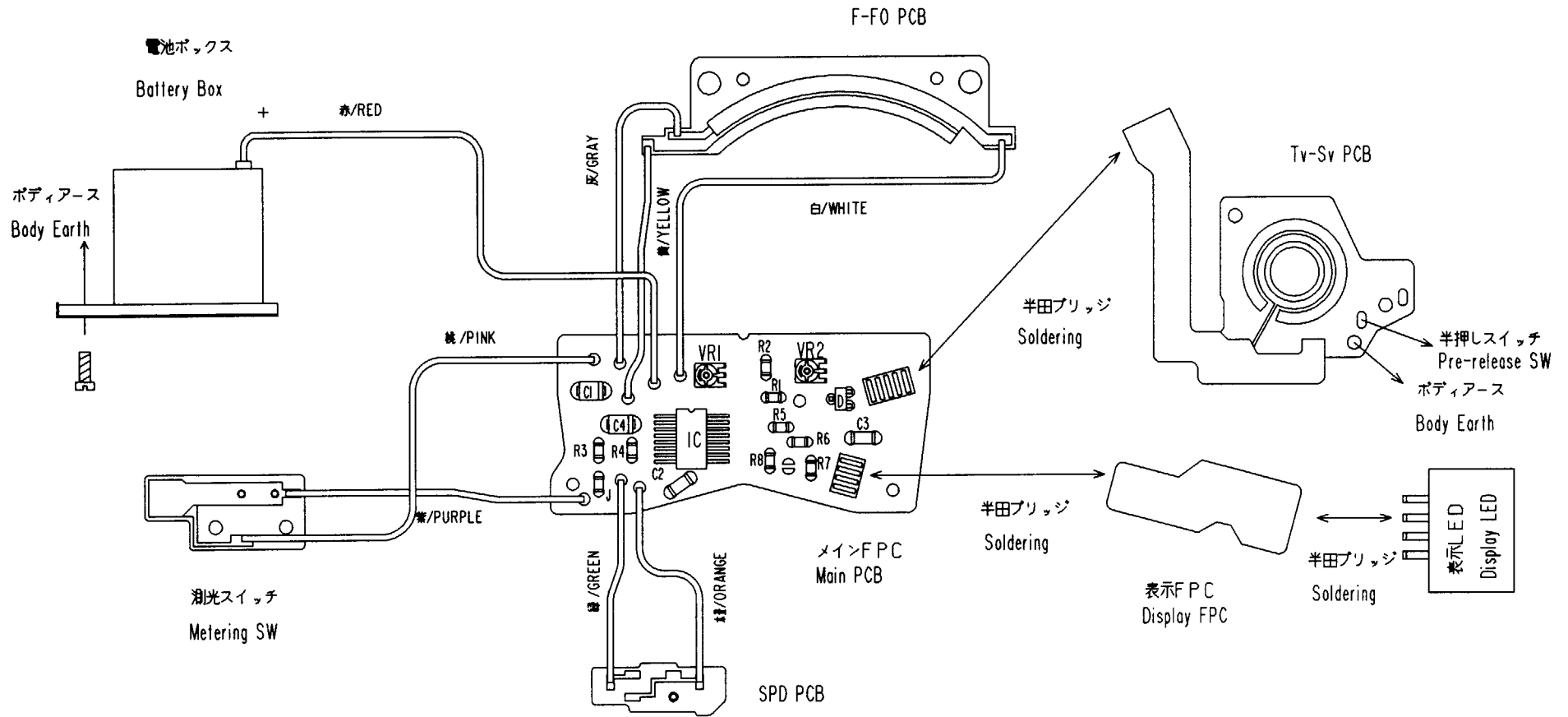
Screw #S17, seal #54

(7) Camera back unit #A36

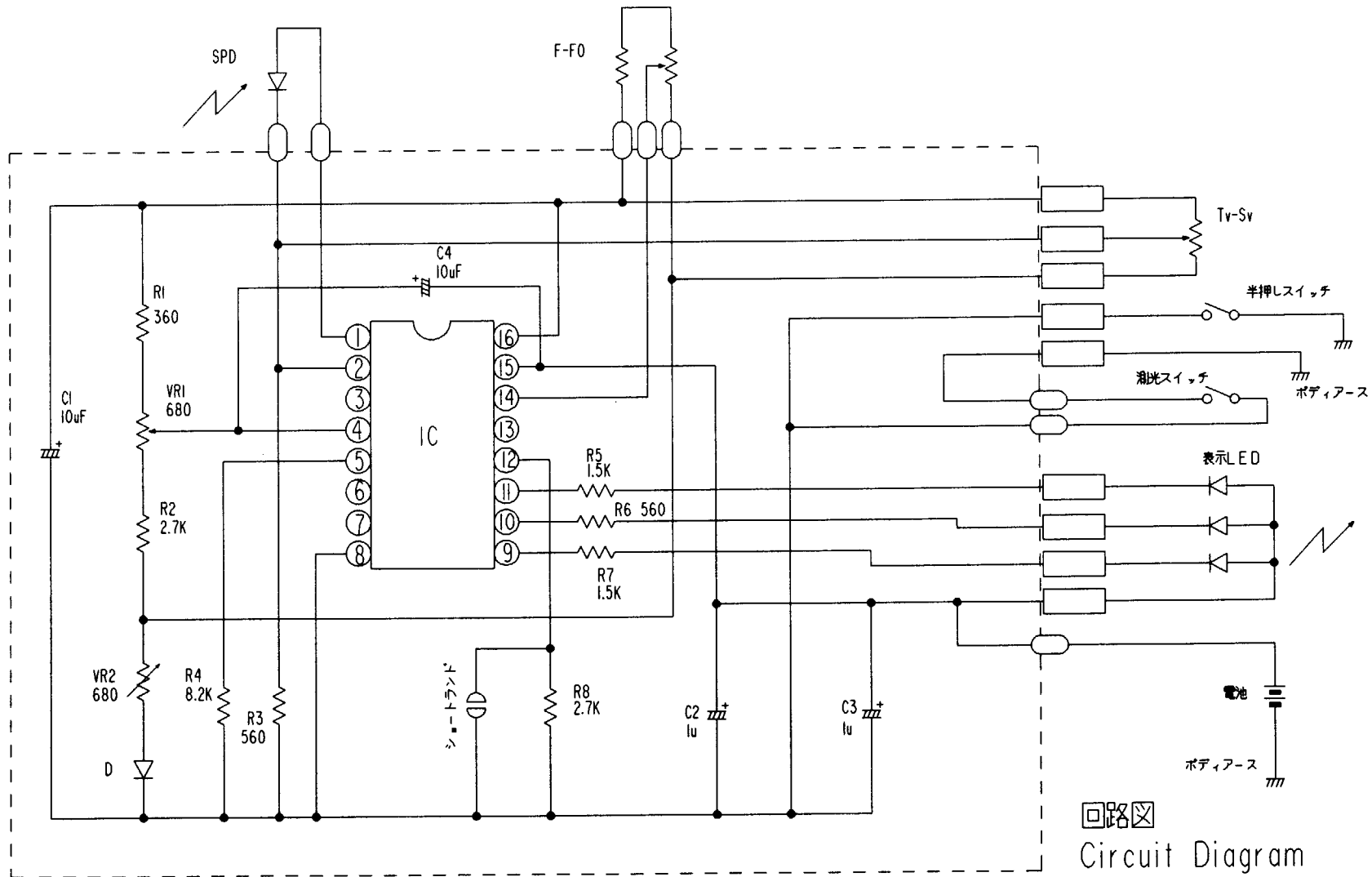
(8) Bottom cover #39 (Screws #S30x4)



#S30x4



実体配線図
Wiring Diagram



回路図
Circuit Diagram

INSPECTION STANDARDS
FOR REPAIR

FAA31051-R3377. A

	Item	Condition / Standard					Remarks
WINDING REWIND/RELEASE	Film advance	Film loaded torque : 4.5Kg-cm or less					Bar-type pressure gauge slide calipers
	spool	Slipping torque : 180 ~ 450g					
	Rewind knob	Rewind torque : 1.5Kg-cm or less					
	Shutter button	Release power : 300 ~ 600g Switch ON stroke : 0.3 ~ 0.8 mm					
SHUTTER SPEEDS DELIVERY	Exposure time	(ms)					Shutter tester
		Shutter speed	Upper limit	Standard	Lower limit	Exposure variation	
		1	1366	1000	732	±0.45EV	
		1/2	683	500	366		
		1/4	342	250	183		
		1/8	171	125	91.5		
		1/15	85.4	62.5	45.8		
		1/30	42.7	31.25	22.9		
		1/60	21.4	15.63	11.4	0 ~ +0.5EV	
		1/125	11.0	7.81	7.81		
		1/250	5.92	3.91	2.58	±0.6EV	
		1/500	2.96	1.95	1.29		
		1/1000	1.64	0.98	0.58	±0.75EV	
	1/2000	0.82	0.49	0.29			
X contact	Timelag 0~ 1.0 ms					Flash synch tester	
contact rate	50% or more						
Self-timer	Delayed action time : 10±3 sec					Stop watch	

	Item	Condition / Standard	Remarks																																																
VIEWFINDER	Infinity focus	$\pm 20''$ (Not to be varied after/before winding)																																																	
	Viewfinder coverage	93 % or more																																																	
EXPOSURE METER ACCURACY	Accuracy allowance	ISO 100 K = 1.16 50mm / F1.4 <table border="1" style="margin-left: auto; margin-right: auto;"> <tr> <td>L V</td> <td>6</td> <td>9</td> <td>12</td> <td>15</td> </tr> <tr> <td>F</td> <td>2.8</td> <td>4</td> <td>5.6</td> <td>8</td> </tr> <tr> <td>Shutter speed</td> <td>1/8</td> <td>1/30</td> <td>1/125</td> <td>1/500</td> </tr> </table> <table style="margin-left: auto; margin-right: auto;"> <tr> <td style="border: 1px solid black; padding: 2px;">+</td> <td style="text-align: center;">●</td> <td style="text-align: center;">●</td> <td style="text-align: center;">○</td> <td style="text-align: center;">○</td> <td style="text-align: center;">○</td> <td rowspan="3" style="vertical-align: middle;"> ● Turns ON ○ Turns OFF ① ± 0.5 EV ② 0.3~1.4 EV ③ -0.3 ~1.7 EV </td> </tr> <tr> <td style="border: 1px solid black; padding: 2px;">○</td> <td style="text-align: center;">○</td> <td style="text-align: center;">●</td> <td style="text-align: center;">●</td> <td style="text-align: center;">●</td> <td style="text-align: center;">○</td> </tr> <tr> <td style="border: 1px solid black; padding: 2px;">-</td> <td style="text-align: center;">○</td> <td style="text-align: center;">○</td> <td style="text-align: center;">○</td> <td style="text-align: center;">●</td> <td style="text-align: center;">●</td> </tr> <tr> <td></td> <td></td> <td style="text-align: center;">↑</td> <td style="text-align: center;">↑</td> <td style="text-align: center;">↑</td> <td></td> <td></td> </tr> <tr> <td></td> <td></td> <td style="text-align: center;">②</td> <td style="text-align: center;">①</td> <td style="text-align: center;">③</td> <td></td> <td></td> </tr> </table>	L V	6	9	12	15	F	2.8	4	5.6	8	Shutter speed	1/8	1/30	1/125	1/500	+	●	●	○	○	○	● Turns ON ○ Turns OFF ① ± 0.5 EV ② 0.3~1.4 EV ③ -0.3 ~1.7 EV	○	○	●	●	●	○	-	○	○	○	●	●			↑	↑	↑					②	①	③			Shutter tester Tool lens (50/1.4)
	L V	6	9	12	15																																														
F	2.8	4	5.6	8																																															
Shutter speed	1/8	1/30	1/125	1/500																																															
+	●	●	○	○	○	● Turns ON ○ Turns OFF ① ± 0.5 EV ② 0.3~1.4 EV ③ -0.3 ~1.7 EV																																													
○	○	●	●	●	○																																														
-	○	○	○	●	●																																														
		↑	↑	↑																																															
		②	①	③																																															
LENS MOUNT	Aperture lever height	After mirror charge : 3.1 +0.1 ~ -0 Balance between befor/after charge : 0.15 ~ 0.3mm Torgue : 95 g or more	Aperture lever positioning gauge Bar-type pressure gauge																																																
	Aperture coupling ring	Torgue forward 650 g reversed 300 g	Dial gauge																																																
	Metal back focus	46.67 \pm 0.02 mm																																																	
		Parllelness : 0.04 mm or less																																																	
	Balance of height between internal and external film rails : 0.23 \pm 0.03																																																		
OTHERS	Pressure plate	Leveling : 0.05 mm or less	Power supply Digital multi-meter																																																
	Battery checker	LED turns on at 2.6V and off at 2.2V																																																	
	Current consumption	5 mA (max) When one LED Turns ON 10mA (max) When both LED Turns ON																																																	