



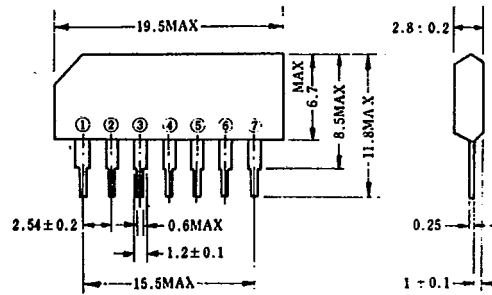
ECG1082

FM IF AMPLIFIER

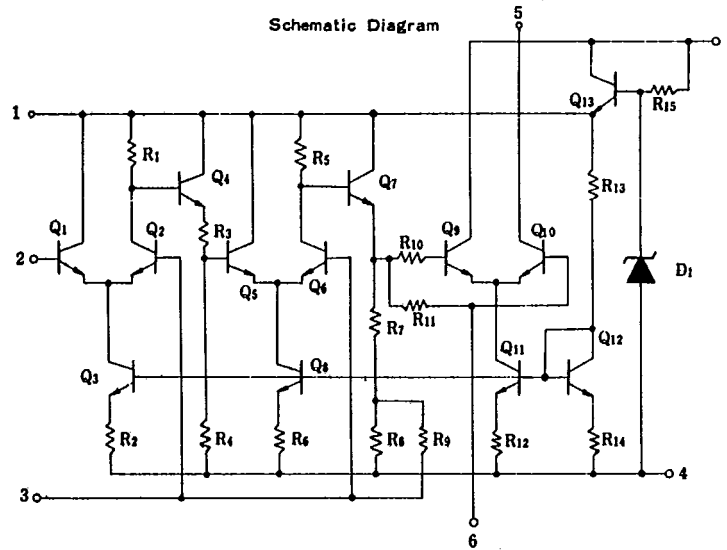
Outline (Unit : mm)

Silicon monolithic IC intended for use as a three-stage FM IF amplifier having exceptionally high voltage gain and limiting characteristics. From pin 1 the stabilized voltage can be applied to the mixer stage.

1	BY PASS	5	OUT PUT
2	INPUT HIGH	6	BY PASS
3	INPUT LOW	7	V _{CC} '
4	GND		



Schematic Diagram



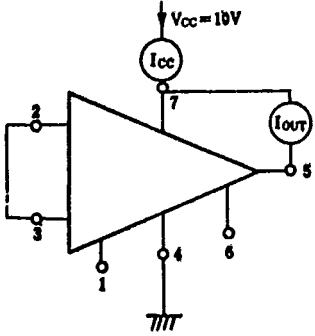
Electrical Characteristics (T_a 25°C, V_{CC} 10V)

Item	Conditions	Circuit	MIN.	TYP.	MAX.	Unit
I _{CC}	D.C. Current	1.	8.0	12.5	17.0	mA
I _{OUT}	② D.C. Current	1.	0.9	1.6	2.3	mA
V _I	①		4.4	5.1	5.8	V
A _v	f=10.7MHz, R _C =50Ω R _L =1KΩ, V _i =40dB	2.	60	66	72	dB
R _{is}	f=10.7MHz	3.	—	10	—	KΩ
C _{is}	f=10.7MHz	3.	—	5	—	pF
R _{OUT}	f=10.7MHz	4.	—	30	—	KΩ
C _{OUT}	f=10.7MHz	4.	—	3	—	pF

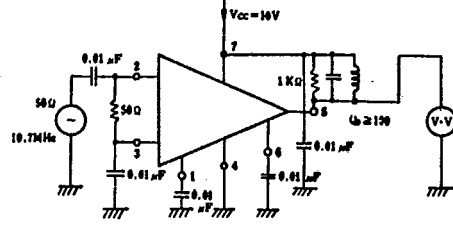
Absolute Maximum Ratings (T_a=25°C)

V _{CC}	15	V
V _{IN}	±3.0	V
P _d	300	mW
T _{STG}	-20 ~ +75	°C
T _{MJ}	-40 ~ +125	°C

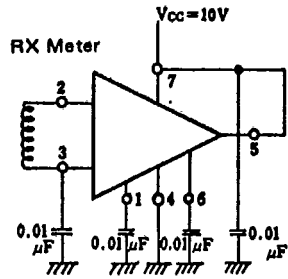
1 Test Circuits



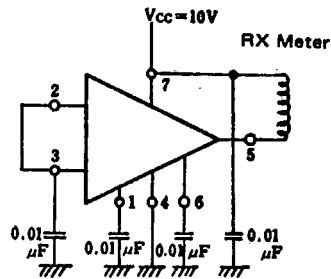
2 10.7MHz Gain Test Circuit



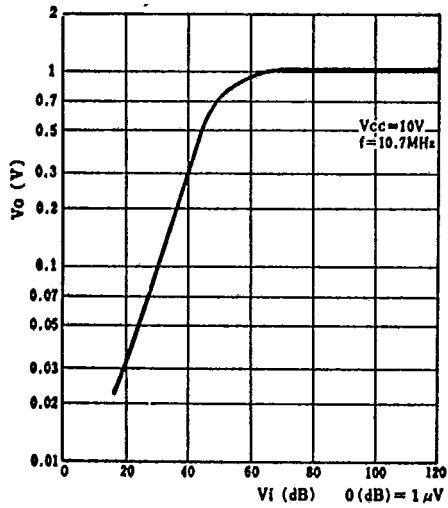
3 R in-C in Test Circuit



4 R out-C out Test Circuit



Limiting Curve



Voltage Gain vs Frequency

